



*‘Have nothing in your house that you do
not know to be useful, or believe to be
beautiful.’*

WILLIAM MORRIS

1880



WILLIAM MORRIS

1834 - 1896

An iconic artist, poet, writer and activist, William Morris believed that art should be for the people, by the people. He valued simplicity, utility, and beauty and championed nature as the inspiration for everything. A pioneer of the Arts and Crafts movement, his wallpaper and textile designs remain universally revered. William Morris At Home celebrates and upholds his principles to create beautiful and useful products that are well-crafted and sustainable.





William Morris At Home is an authentic Morris brand
in partnership with the William Morris Gallery,
a not-for-profit organisation based in Morris' childhood
home in Walthamstow, England.

The Gallery holds the world's largest archive of
his designs and with privileged access,
William Morris At Home continues his legacy with
beautiful and useful lifestyle products that are
well-crafted and sustainable - elevating the everyday.

Every William Morris At Home purchase supports the
Gallery, bringing the life and work of William Morris,
artist and environmental campaigner,
to future generations.





KELMSCOTT GARDENS VOL II

With access to the William Morris Gallery's extensive archive of detailed, hand printed wallpapers and textiles, we have created the William Morris At Home fabric collection, a charming range of fabrics that wonderfully embody Morris' passion for nature and botanical beauty. Discovering an intricate silk jacquard of Larkspur in the William Morris Gallery archive inspired us to infuse Morris' designs with opulence. Sumptuous satin jacquards add a luxurious touch to delicate foliage while linear embroidered velvets offer an indulgent tactility. All encompass the iconic imagery of William Morris and possess a timeless quality to cherish. The colour palette in this volume ranges from rich walnut and berry hues to serene tones of indigo and sage. Softer tones of limestone contrast with the warmer ochre tones and strong iron shades. These colours, spanning both volumes, seamlessly blend and contrast, making it effortless to combine favourite designs.



Featured fabrics: Cushions, top to bottom: Willow Woven in Jute & Willow in Limestone. Fabric: Marigold Velvet in Sage.



AFRICAN MARIGOLD - LIMESTONE



WILD TULIP - LIMESTONE



WILLOW - LIMESTONE



AFRICAN MARIGOLD VELVET - LIMESTONE



WILLOW - JUTE



STRAWBERRY THIEF WOVEN - LIMESTONE



MARIGOLD VELVET - JUTE



LODDEN EMBROIDERY - CHALK



LARKSPUR WOVEN - LIMESTONE



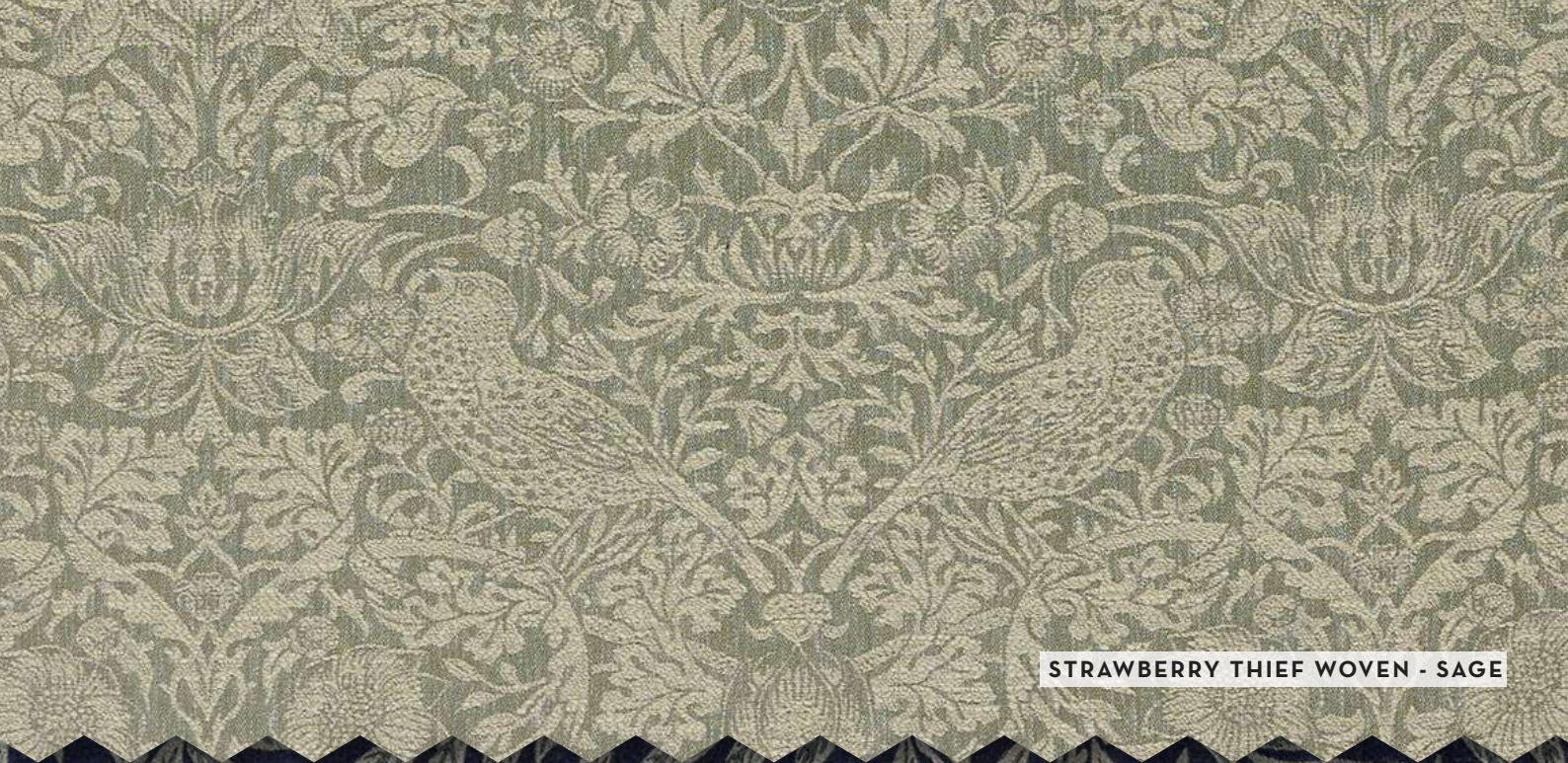
WILLOW WOVEN - JUTE



Featured fabrics: Sofa; sofa.com Saturday: Marigold Velvet in Jute. Curtain: Strawberry Thief Woven in Walnut. Cushions, front to back: Lodden Embroidery in Chalk, Larkspur Woven in Limestone & African Marigold Velvet in Limestone.



Featured fabrics: Curtain: African Marigold Velvet in Cornflower. Cushions, top to bottom: Lodden Embroidery in Sage, Lodden Embroidery in Indigo, Larkspur Woven in Indigo, Willow in Indigo, Marigold Velvet in Indigo & Wild Tulip in Sage. Footstool; sofa.com Isla: Marigold Velvet in Sage.



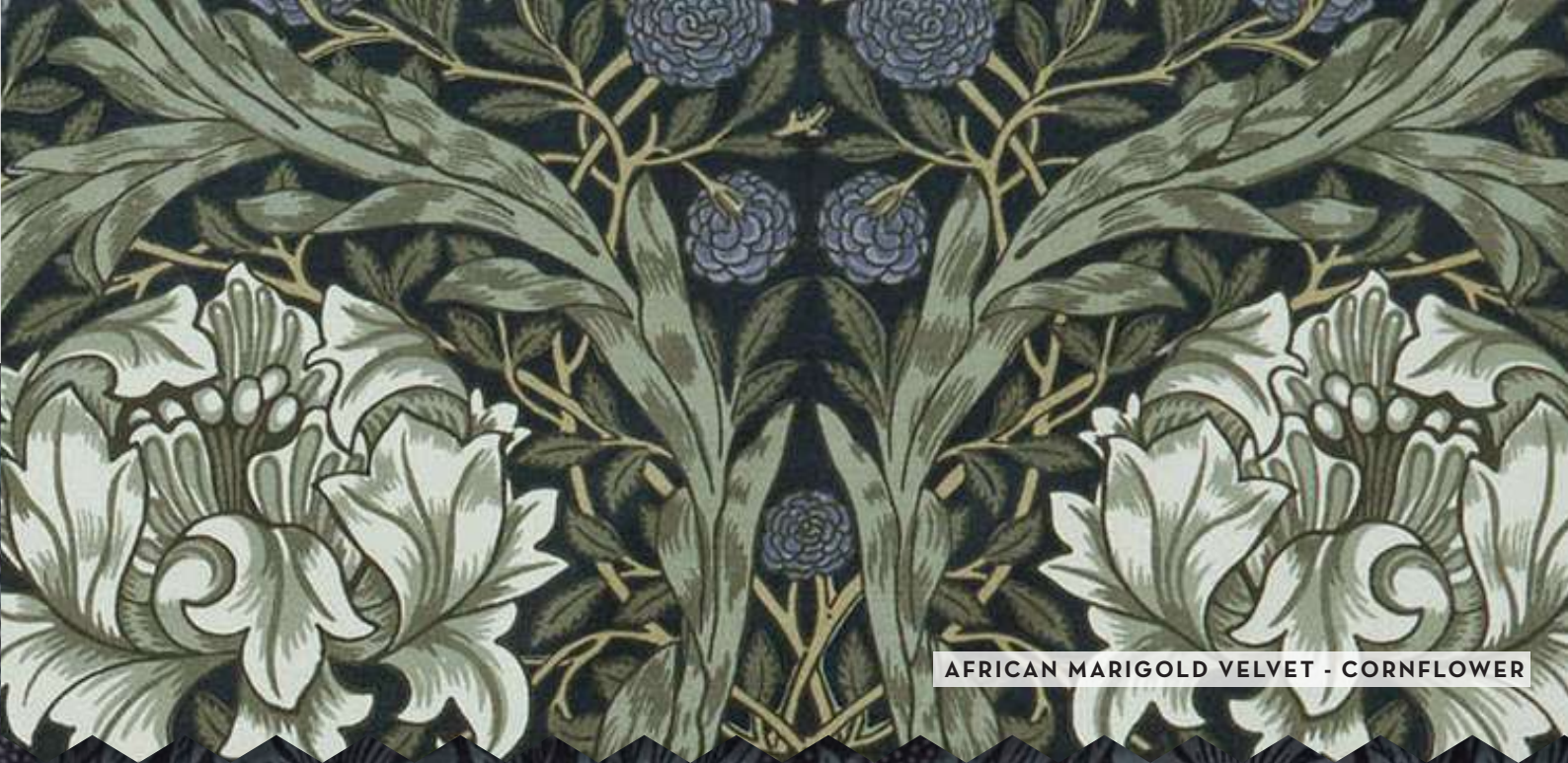
STRAWBERRY THIEF WOVEN - SAGE



WILLOW WOVEN - INDIGO



MARIGOLD VELVET - SAGE



AFRICAN MARIGOLD VELVET - CORNFLOWER



WILD TULIP - SAGE



WILLOW WOVEN - SAGE



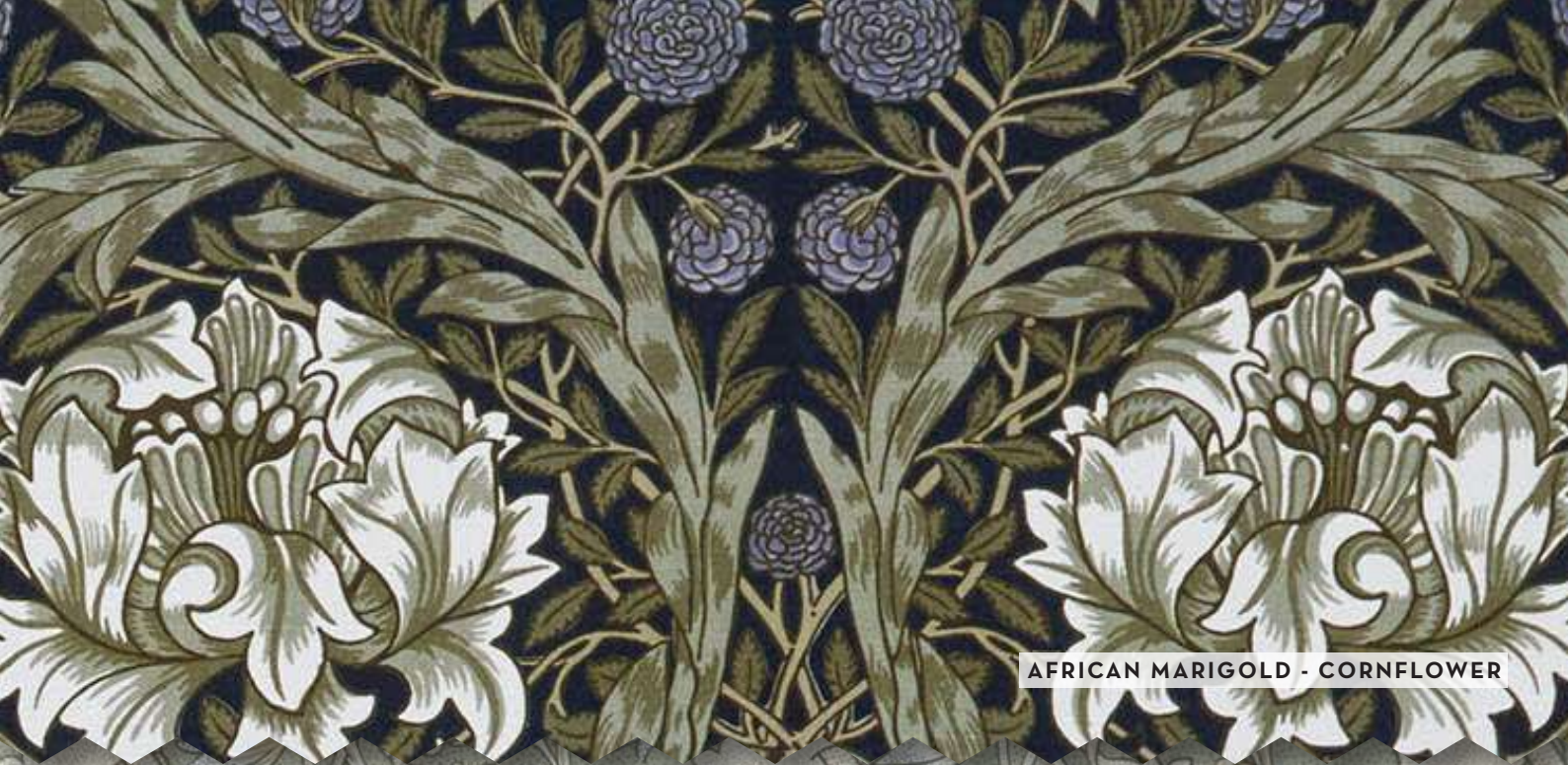
LARKSPUR WOVEN - INDIGO



LODDEN EMBROIDERY - SAGE



WILLOW - INDIGO



AFRICAN MARIGOLD - CORNFLOWER



WILD TULIP - SAGE



LODDEN EMBROIDERY - INDIGO



Featured fabrics: Material, top to bottom: African Marigold in Cornflower, Willow in Indigo, Marigold Velvet in Indigo, Wild Tulip in Sage & Larkspur Woven in Indigo.



Featured fabrics: Curtain: Marigold Velvet in Berry. Cushions, top to bottom: Lodden Embroidery in Clay, Strawberry Thief Woven in Walnut & Marigold Velvet in Indigo. Footstool, sofa.com Ringo with wooden top: African Marigold Velvet in Walnut.



AFRICAN MARIGOLD - WALNUT



STRAWBERRY THIEF WOVEN - WALNUT

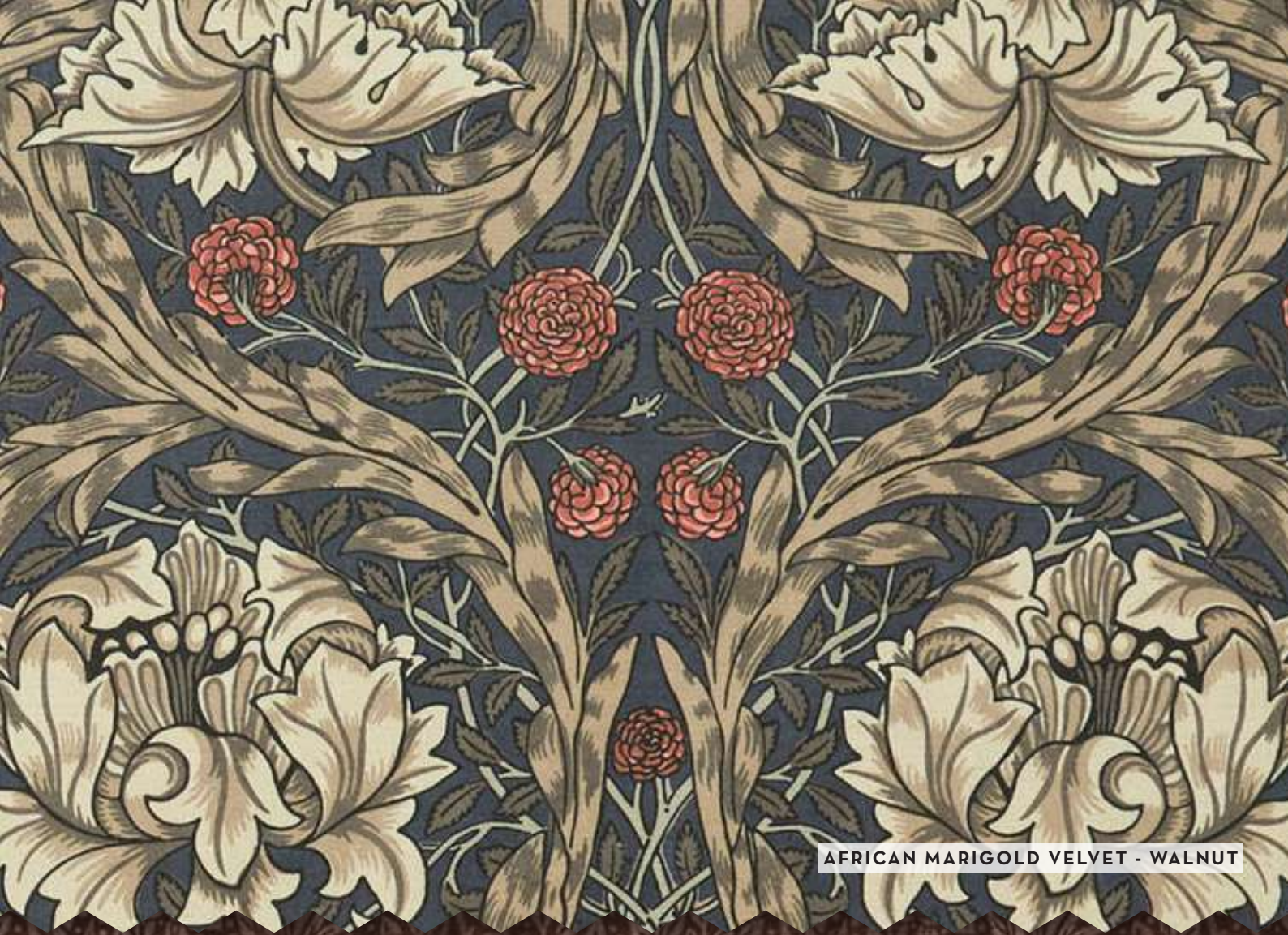


MARIGOLD VELVET - CHARCOAL



LODDEN EMBROIDERY - CLAY

LARKSPUR WOVEN - BERRY



AFRICAN MARIGOLD VELVET - WALNUT



MARIGOLD VELVET - BERRY



Featured fabrics: Cushion: Wild Tulip in Ochre. Footstool; sofa.com Luna, left to right: Lodden Embroidery in Iron & African Marigold Velvet in Iron. Throw: Marigold Velvet in Iron & Larkspur Woven in Ochre.



WILD TULIP - OCHRE



WILLOW WOVEN - IRON



LODDEN EMBROIDERY - OCHRE



LARKSPUR WOVEN - OCHRE



MARIGOLD VELVET - IRON



LODDEN EMBROIDERY - IRON



WILLOW - WELD



AFRICAN MARIGOLD - IRON



AFRICAN MARIGOLD VELVET - IRON











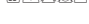





MARIGOLD VELVET - OCHRE

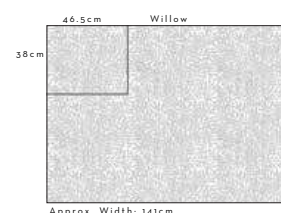
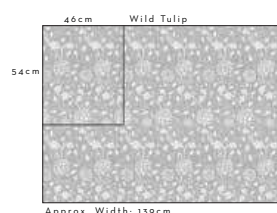
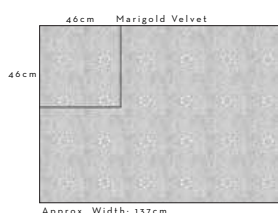
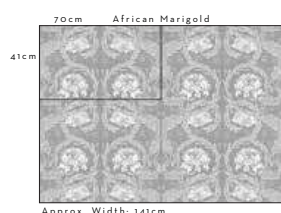


Featured fabrics: Cushions, left to right: Willow in Weld, African Marigold Velvet in Iron, Wild Tulip in Ochre & Marigold Velvet in Iron. Cushion, floor: Lodden Embroidery in Iron. Throw: Marigold Velvet in Iron & Larkspur Woven in Ochre.

Kelmscott Gardens

Volume II

DESIGN	CARE INSTRUCTIONS	SUITABILITY AND USAGE	COMPOSITION	APPROXIMATE WIDTH * (CM)	VERTICAL PATTERN REPEAT * (CM)	HORIZONTAL PATTERN REPEAT * (CM)	MARTINDALE	WEIGHT (GR/M2)
AFRICAN MARIGOLD			100% COTTON SUSTAINABLY SOURCED	141	41	70	16,000 LIGHT DOMESTIC	230
AFRICAN MARIGOLD VELVET	DRY CLEAN ONLY		100% POLYESTER	147 139 USABLE	41	69	50,000 SEVERE CONTRACT	385
LARKSPUR WOVEN			63% COTTON, 37% POLYESTER	138	36	46.5	N/A	232
LODDEN EMBROIDERY	DRY CLEAN ONLY		100% POLYESTER EMB: 100% COTTON	143 135 USABLE	31.5	23	50,000+ SEVERE CONTRACT	478
MARIGOLD VELVET	DRY CLEAN ONLY		100% POLYESTER	146 137 USABLE	46	46	50,000 SEVERE CONTRACT	385
STRAWBERRY THIEF WOVEN	DRY CLEAN ONLY		83% POLYESTER, 17% COTTON	137	41	35	N/A	465
WILD TULIP			100% COTTON SUSTAINABLY SOURCED	139	54	46	16,000 LIGHT DOMESTIC	230
WILLOW			100% COTTON SUSTAINABLY SOURCED	141	38	46.5	16,000 LIGHT DOMESTIC	230
WILLOW WOVEN			67% POLYESTER, 33% VISCOSE	140	41.5	46.5	N/A	242



Fabrics can be treated to required FR standards on request

*PATTERN REPEATS, JOINED WIDTHS AND PATTERN ALIGNMENT

Pattern repeats and widths are approximate and are not exact and can vary by ±5%, we cannot guarantee exact measurement. Please ensure that pattern alignment is adequate to produce a satisfactory result.

Textiles are not completely stable. It is always possible that the pattern will not be completely 'square' on the cloth. Whilst every effort is made to avoid distortion, a commercial tolerance is to be accepted. Please check the pattern alignment is acceptable before cutting and making. We do not accept claims after the goods have been cut or sewn.

COLOUR VARIANCE

Slight colour variances may occur between batches.

Furniture provided by
sofa.com

Ashley Wilde

Soft Furnishings Since 1950

Emmanuel House, Travellers Close Welham Green, Hatfield Hertfordshire AL9 7LD, UK

Tel: +44 (0) 1707 635 201
www.ashleywildegroun.com/wmah

KEY

-  SUITABLE FOR UPHOLSTERY
-  SUITABLE FOR CURTAINS
-  WASH AT 30°C
-  DO NOT BLEACH
-  DO NOT TUMBLE DRY
-  COOL IRON
-  LINE DRY
-  SUITABLE FOR DRY CLEANING

This digital brochure is to be used as a point of reference by the sales representatives; this is not a replacement for the physical fabric books. While we take great care to ensure accurate colour matching, we cannot guarantee the accuracy due to variations in display on different screens. This is also true for the scales of the fabrics displayed throughout. To avoid any disappointment please ensure you view the physical fabric book, and request samples prior to placing a full order.



Featured fabrics: Curtain: Strawberry Thief in Walnut. Sofa; sofa.com Saturday: Marigold Velvet in Jute. Footstool; sofa.com Isla: Marigold Velvet in Sage. Cushions, left to right: African Marigold Velvet in Iron, Wild Tulip in Sage, Larkspur Woven in Indigo, African Marifold in Cornflower & Marigold Velvet in Indigo. Cushion on footstool: Willow in Jute. Fabric drape: Strawberry Thief Woven in Sage.



KELMSCOTT GARDENS VOL II