

alhambra

TIERRA COLLECTION

SABI COLLECTION  
X LORNA DE SANTOS

OCASO  
COLLECTION

SALTY COLLECTION

# TIERRA

WHAT WE ARE,  
WHAT WE WERE

The Tierra collection goes beyond design; it is a journey to our roots, a celebration of who we are and who we were. Inspired by the connection with our history, Tierra rescues the ancestral nuances and fuses them with the freshness of the present. Each fabric carries with it a memory, honouring our roots and inviting us to look to the future always aware of where we come from.

In every piece of this collection there is a whisper from the past and a promise for the future. It is a statement of respect for our history and a commitment to a sustainable tomorrow: every thread has been woven with a purpose and meaning. The selection of fabrics is not accidental. It has been carefully thought out to pay homage to the land itself. Natural fibres such as cotton, linen, and wool that evoke authenticity and sustainability, while their finishes highlight the beauty of imperfection, like the landscapes that inspire us. Each material reflects respect for resources and reminds us of our responsibility to the environment that sustains us.

In Tierra, the fabrics not only embellish but connect, narrate, and transform. They are an invitation to feel and remember: to feel the connection with what is organic, what is alive, and to remember that decoration can be more than appearance: it can be a tribute to our roots, an homage to the land, and a promise to walk alongside it towards a more conscious tomorrow.

Each piece is an ode to our roots and an invitation to remember that, like the land, we are origin, history, and future.

ORIGEN

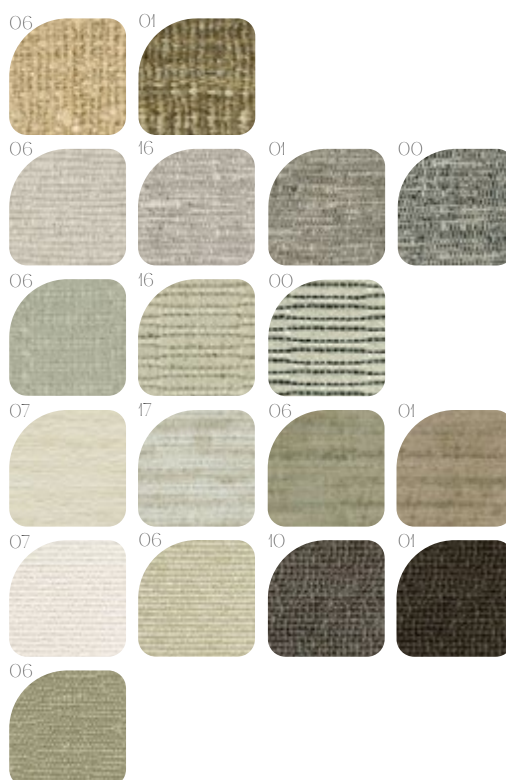
RAICES

ARCILLA

SALITRE

GAIA

PIEDRA



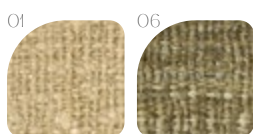
# ORIGEN

PURE SILK IN ITS  
FINEST FORM

This design is born from the wisdom of ancient artisans, who perfected techniques that have endured over time. Handwoven with visible weft threads, each piece represents traditions passed down through generations. These techniques not only pay homage to the past but also preserve the craft, ensuring its legacy remains alive in a modern world.

With a handmade net-like design, Origen lets light filter softly, creating delicate shadows and strokes that evoke an intimate connection with the land. This silk, robust and naturally wrinkle-resistant, is designed for those seeking to bring the essence of nature into their spaces, providing a unique presence.

Its sustainable and biodegradable character not only enhances its beauty but also shows a deep commitment to caring for the environment.



100% SILK

Width: 135 cm - 53 in | Weight: 667 g/m<sup>2</sup> - 19.7 oz/yd<sup>2</sup>



FR UPON REQUEST

SELVEDGE | ORILLO  
UP ROADED | SENTIDO URDIMBRE®

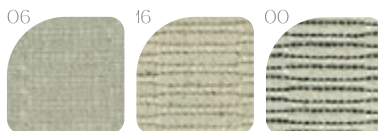
# ARCILLA

A HIDDEN LANGUAGE  
AMONG ROOTS

The Arcilla design captures the essence of the dualism of life: the strength of nature and the delicacy of human artisanry. It represents the deep bond between art and the land, a fabric that embodies the creative force of our hands shaping nature.

Each fibre of Arcilla tells a story full of beliefs, emotions and the legacy of those who found in this material a means of expression. This jacquard fabric, available in three colours, features a unique and contrasting texture: on one side, smooth and sleek, evoking polished clay; on the other, rough and undulating, reminiscent of the lands that sustain us.

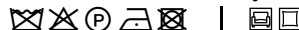
Arcilla is a fabric designed for upholstery and decoration, making tangible the essence of the land. It is an artistic expression, a language of its own that reveals our roots and connects us with our deepest identity.



22% VISCOSE, 20% WOOL, 20% ACRYLIC  
15% POLYESTER, 12% COTTON, 11% LINEN

Width: 140 cm - 55 in | Weight: 680 g/m<sup>2</sup> - 20.1 oz/yd<sup>2</sup>

Martindale: 45,000 cycles



FR UPON REQUEST

SELVEDGE | ORILLO  
UP ROADED | SENTIDO URDIMBRE®

# RAICES

THE DEEP  
CONNECTION  
BETWEEN DESIGN  
AND NATURE

Raíces serves to remind us that our roots are as important as our evolution. This design represents the deep connection with the land and our origins, inspired by the strong, interwoven roots that sustain life from its foundations. It is a symbol of stability and of the union that connects us to our essence.

The wavy texture of this fabric, crafted in jacquard ottoman, evokes the irregularities of the land. Like roots, each stitch tells a story, weaving a narrative of shared experiences.

Raíces is designed for projects that seek an authentic bond with nature, bringing character and depth to upholstery and home decor.



21.5% WOOL, 21.5% ACRYLIC, 18% POLYESTER,  
17.5% VISCOSE, 13% COTTON, 8.5% LINEN  
Width: 140 cm - 55 in | Weight: 780 g/m<sup>2</sup> - 23.0 oz/yd<sup>2</sup>  
Martindale: 18,000 cycles



FR UPON REQUEST



SELVEDGE | ORILLO  
UP ROADED | SENTIDO URDIMBRE

# PIEDRA

THE STURDINESS  
OF NATURE  
TRANSFORMED INTO  
DESIGN

The rough texture of Piedra evokes the strength of the land and the work of the hands that shape it.

This design reflects the stability and sturdiness of nature in its purest form, inspired by the resilience and character of rock formations.

The fabric, crafted in taffeta, features a rough texture that mimics natural rock formations, giving its surface an organic and authentic look. With a composition of 80% linen and 20% cotton, Piedra embodies the essence of the land. To the touch, its irregularities convey the feeling of continuity felt when standing on firm ground.

Available at a width of 140cm, this design is ideal for upholstery and home decor projects. Its presence transforms spaces, creating warm and comforting environments that invite tranquillity and balance.



88% LINEN, 12% COTTON  
Width: 145 cm - 57 in | Weight: 1142 g/m<sup>2</sup> - 33.7 oz/yd<sup>2</sup>  
Martindale: 90,000 cycles



FR UPON REQUEST



SELVEDGE | ORILLO  
UP ROADED | SENTIDO URDIMBRE

# SALITRE

## SEA SALT TURNED INTO TEXTURE

Salitre represents the perfect union between land and sea, a natural canvas where salt leaves its ephemeral trace on the surface, creating art through organic patterns. This design stands out thanks to its special weave, resulting in a velvety and soft to the touch texture, offering a unique sensory experience.

Inspired by the natural palette of the land, Salitre is available in four hues that capture the subtle connection of the sea embracing the land. Each colour evokes this serene and harmonious bond between natural elements.

Designed for those seeking a deeper connection with nature through design, Salitre is an ideal choice for curtains, cushions, and home decorative elements, bringing warmth and elegance to any space.



12% COTTON, 25% WOOL, 24% POLYESTER

Width: 130 cm - 51 in | Weight: 405 g/m<sup>2</sup> - 119 oz/yd<sup>2</sup>



FR UPON REQUEST



SELVEDGE | ORILLO  
UP ROADED | SENTIDO URDIMBRE

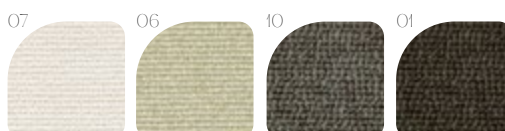
# GAIA

## THE EARTH TRANSFORMED INTO TIMELESS DESIGN

Gaia is the personification of the Earth, a celebration of the beauty and strength that emanate from life and natural elements. This design captures the essence of the connection between what is rustic and sophisticated, reminding us that true beauty arises from this union.

Gaia, a thick ottoman fabric, stands out for its pronounced texture that evokes an artisanal and timeless character. Its palette of four natural shades, ranging from soft whites to warm browns, brings a unique sense of warmth and elegance.

Crafted with a balanced composition of 50% cotton, 20% wool, 20% viscose, and other fibers. Gaia combines durability and style. Designed for high-performance upholstery, this fabric adapts to the most demanding spaces without losing its innate sophistication, making it a perfect ally for those seeking functionality and aesthetics in harmony.



50% COTTON, 20% WOOL, 20% VISCOSE

5% POLYESTER, 5% OTHER FIBERS

Width: 140 cm - 55 in | Weight: 742 g/m<sup>2</sup> - 219 oz/yd<sup>2</sup>

Martindale: 90,000 cycles



FR UPON REQUEST



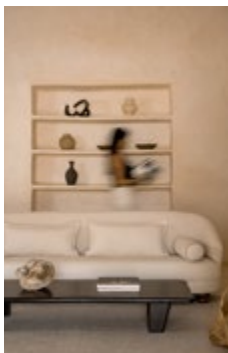
SELVEDGE | ORILLO  
UP ROADED | SENTIDO URDIMBRE



# TIERRA

IMAGE GALLERY  
FROM THE COLLECTION

01



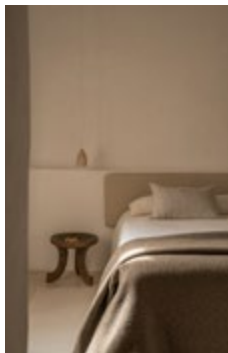
02



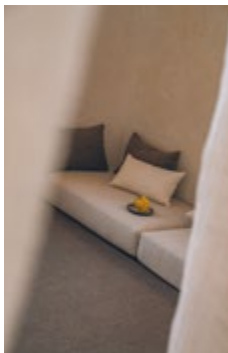
04



05



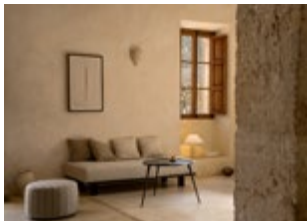
08



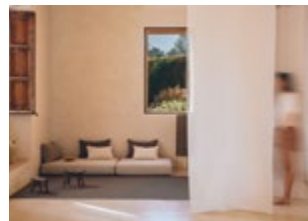
06



03



07



10



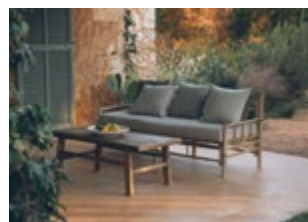
09



11



12



# OCASO

PARALLEL LINES THAT  
SKETCH THE SUN  
RESTING ON THE  
HORIZON



Ocaso captures the moment when the sun sets beyond the horizon, projecting elongated shadows in fine lines. This design symbolises the end of a cycle and the renewal of what is to come, highlighting the beauty in simplicity. It reminds us that every ending holds the promise of a new beginning.

Its lines, delicately traced on a natural linen substrate, represent the rays of sun fading away, shaping the silhouettes of the landscape at sunset. Like the sunset itself, this design uses minimal elements to tell a story of transition and hope, emphasising harmony among simplicity and meaningfulness.

With a composition of linen, viscose, and wool, Ocaso combines natural raw materials with high-precision techniques. Its robust structure ensures durability, while its fine and soft finish adds naturalness and warmth. This versatile fabric is ideal for upholstery, curtains and home decor.

Available in five colours on a natural linen substrate, Ocaso transforms spaces into balanced environments, evoking the serenity and timeless beauty of a sunset.



95% LINEN, 3% VISCOSE, 2% WOOL

Width: 140 cm - 55 in | Weight: 363 g/m<sup>2</sup> - 10.7 oz/yd<sup>2</sup>

Martindale: 20,000 cycles



65°F - 85°F



FR UPON REQUEST



SELVAGE | ORILLO  
UP ROADED | SENTIDO URDIMBRE

# CAL

THE PURITY OF  
NATURE

Cal represents the beginning, the foundation where everything starts. A fabric that purifies and gives new life to each piece, becoming a perfect canvas where the organic texture takes centre stage.

This fabric features a subtle weave with slight irregularities that evoke the authenticity of linen, connecting us to the essential elements of nature. Its smooth and natural surface enhances its versatile character, ideal for upholstery, curtains and home decor.

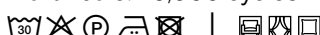
Cal celebrates beauty in its purest form. This design exudes authenticity and finds its place in functional pieces meant to convey a connection to nature and the essential.



100% LINEN

Width: 140 cm - 55 in | Weight: 335 g/m<sup>2</sup> - 9.9 oz/yd<sup>2</sup>

Martindale: 20,000 cycles



65°F - 85°F



FR UPON REQUEST

# Ocaso

IMAGE GALLERY  
FROM THE COLLECTION

10



07



08



09



06





# SABI

THE CONNECTION  
BETWEEN NATURE,  
EMOTIONS AND THE  
PASSAGE OF TIME

REI, ICHI, NI, SAN, SHI

NI-JUU

GO-JUU

NANA-JUU

Sabi is a word that evokes the passage of time and its impact on both nature and humanity. Inspired by this concept, we have designed a collection that reflects on the stages of life and the meaning that time adds to everything it touches.

In this collection, we explore how time enriches textures and gives shape to new stories. Growing is a transformation, a transmutation that we have captured in an emotional journey represented through our fabrics. Each one depicts a moment in life, from birth to adulthood:

REI (0 years): Wonder and purity, with no limits to expression.

ICHI, NI, SAN, SHI (10-40 years): Intensity and discovery.

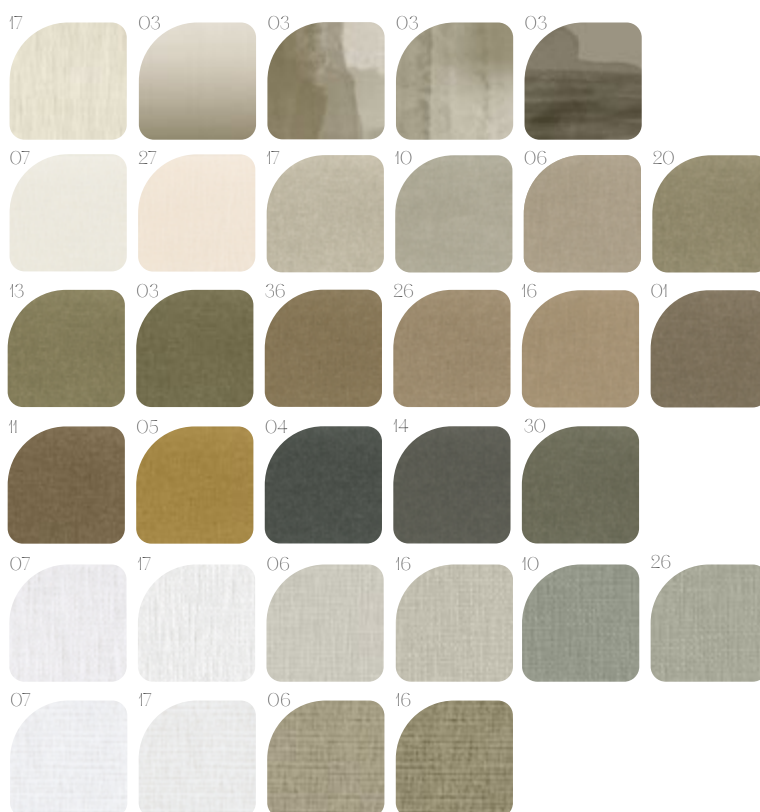
NI-JUU (40-50 years): Ambition and hope.

GO-JUU (50-70 years): Stability and reflection.

NANA-JUU (70-100 years): Nostalgia, strength, and serenity.

Time, as the primary witness of natural cycles, invites us to abandon pre-established paradigms about age and emotions. Each person experiences their stage uniquely, and this collection seeks to build bridges between the past and the future, offering fabrics that emotionally accompany those who choose them.

For this reason, the ages are expressed in Japanese, reminding us that it is not the number that matters, but the emotional state in which we are. Each fabric is an object of connection, designed to endure over time, allowing everyone to find their moment and story in it.



Made from 100% flame-retardant polyester, Rei combines safety and beauty, meeting the highest standards without sacrificing its lightness and elegance. Its delicate texture, with a subtle mesh weave, evokes natural simplicity and the authenticity of the unexplored.

Manufactured in Spain using innovative technology, this sheer fabric offers exceptional quality and a design that transforms any space into a reflection of calm and endless possibilities. Rei reminds us that every beginning is pure, full of promises and potential.

Width: 300 cm - 118 in | Weight: 134 g/m<sup>2</sup> - 4.0 oz/yd<sup>2</sup>



 FR INHERENT

T SELVEDGE | ORILLO  
L RAILROADED | SENTIDO TRAMA

# ICHI NI SAN SHI

## INTENSITY AND DISCOVERY

ICHI 03

SELVEDGE | ORILLO  
RAILROADED | SENTIDO TRAMA



WIDTH 300 cm – 118.11 in

REPETICIÓN 1 cm – 0.39 in

NI 03

SELVEDGE | ORILLO  
RAILROADED | SENTIDO TRAMA



WIDTH 300 cm – 118.11 in

REPEAT 594 cm – 233.8 in

SAN 03

SELVEDGE | ORILLO  
RAILROADED | SENTIDO TRAMA



WIDTH 300 cm – 118.11 in

REPEAT 594 cm – 233.8 in

SHI 03

SELVEDGE | ORILLO  
RAILROADED | SENTIDO TRAMA



WIDTH 300 cm – 118.11 in

REPEAT 594 cm – 233.8 in

Ichi, Ni, San, and Shi reflect the dynamism and energy of the early years of life, a period marked by intense emotions and endless curiosity. These designs capture the spirit of discovery and the passion for exploring new horizons.

With a 100% linen substrate, each design displays unique textures that symbolise various aspects of growth and creativity. From the first strokes of life to compositions suggesting movement and evolution, Ichi, Ni, San, and Shi represent the enthusiasm for forging new paths and overcoming limits.

### ICHI

A soft gradient evoking the initial transition into the world, symbolising the first steps of discovery.

### NI

A tie-dye effect with defined strokes, representing the first expressions of identity and self-construction.

### SAN

More blurred forms capturing free creativity and experimentation during this life stage.

### SHI

An abstract landscape where lines and colours intertwine, telling stories in motion and symbolising the dynamism of growth.

Ichi, Ni, San, and Shi are more than fabrics: they are a tribute to the intensity and discovery of the early years, perfect for those seeking designs full of life and meaning.

ICHI

NI

SAN

SHI



### 100% LINEN

Width: 310 cm – 122 in | Weight: 194 g/m<sup>2</sup> – 5.7 oz/yd<sup>2</sup>



FR UPON REQUEST



SELVEDGE | ORILLO  
RAILROADED | SENTIDO TRAMA

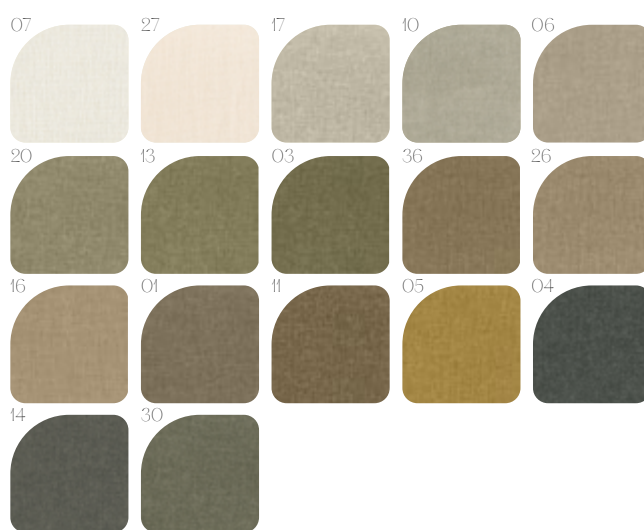
# NI-JUU

AMBITION  
AND  
HOPE

Ni-Juu captures the energy of a life stage marked by ambition and confidence in the future. This design, available in double width, combines functionality and comfort with a soft, pleasant texture, ideal for upholstery and curtains.

Inspired by earthy hues, Ni-Juu offers a palette of 17 natural colours that evoke the connection with essential elements and the strength of the foundations on which every life project is built. Its structured texture and shades tell a story of perseverance and determination

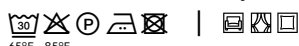
More than just fabric, Ni-Juu is a statement of purpose: a tribute to the ability to transform dreams into realities, celebrating the balance between stability and projection.



56% POLYESTER, 40% LINEN, 4% COTTON

Width: 150-300 cm - 59-118 in | Weight: 574 g/m<sup>2</sup> - 16.9 oz/yd<sup>2</sup>

Martindale: 100,000 cycles



65°F - 85°F

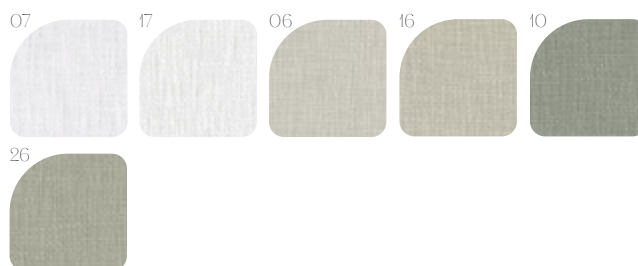
FR UPON REQUEST | SELVEDGE | ORILLO  
UP ROADDED | SENTIDO URDIMBRE

GO-JUU  
STABILITY AND  
REFLECTION

Go-Juu is a tribute to the serenity and strength acquired over time. This fabric, made from 100% cotton, combines the authenticity of nature with the durability of the essential, evoking the stability and warmth that characterise maturity.

Its carefully selected fibres masterfully regulate temperature: cool in warm climates and cosy in cold ones. The softness of its texture and the robustness of its structure make it a warm shelter, ideal for those seeking balance and functionality.

Inspired by all the experiences lived, Go-Juu reflects the wisdom and depth achieved over the years, transforming lived stories into a textile language.



100% COTTON

Width: 145-290 cm - 57-114 in | Weight: 471 g/m<sup>2</sup> - 13.9 oz/yd<sup>2</sup>



65°F - 85°F



 FR UPON REQUEST



SELVEDGE | ORILLO  
UP ROADED | SENTIDO URDIMBRE



# NANA-JUU

NOSTALGIA,  
STRENGTH, AND  
SERENITY

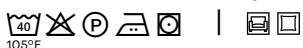
Nana-Juu is a textile tribute to the wisdom and calm achieved over time, combining nostalgia, strength, and serenity in a design that evokes the beauty of lived years.

Its wrinkled texture, achieved with shrinkable fibres, provides a unique depth, like the layers of time enriching every memory.

More than just fabric, Nana-Juu is a statement of the elegance of imperfection, a celebration of maturity and serenity. Its design is an invitation to reconnect with the past and embrace the calm of the present, filling spaces with character, warmth, and meaning.



40% POLYESTER, 28% ACRYLIC, 32% COTTON  
Width: 140 cm - 55 in | Weight: 490 g/m<sup>2</sup> - 14.5 oz/yd<sup>2</sup>  
Martindale: 45,000 cycles



105°F

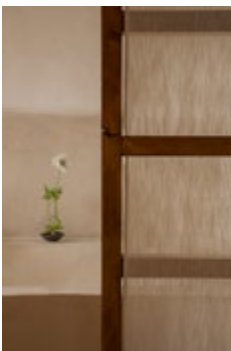
FR UPON REQUEST

SELVEDGE | ORILLO  
UP ROADED | SENTIDO URDIMBRE

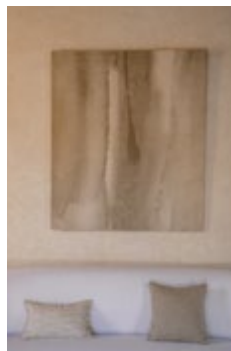
# SABI

IMAGE GALLERY  
FROM THE COLLECTION

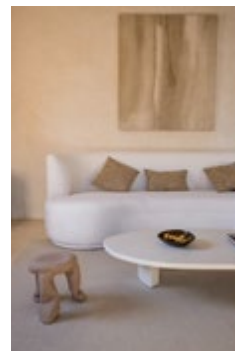
05



07



06



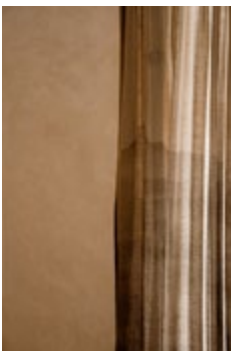
08



09



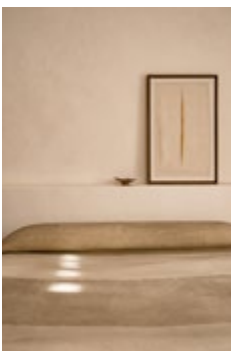
10



11



04



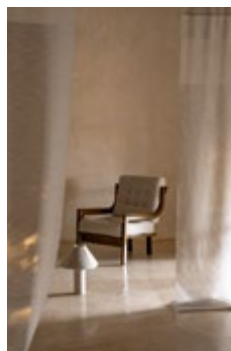
03



02



01



SABI  
TIME  
ITS PASSAGE  
WHAT IT LEAVES US



The Spanish designer and architect designs  
a capsule collection for us.

“LIKE THE BEAUTY AND SERENITY  
THAT EMERGE WITH THE PASSAGE  
OF TIME, OBJECTS, IN PEOPLE.


TIME, AS THE MAIN WITNESS  
OF NATURAL CYCLES, INVITES  
US TO LET GO OF PRECONCEIVED  
NOTIONS ABOUT AGE AND  
EMOTIONS.

WE HAVE DESIGNED THIS TEXTILE  
COLLECTION TO CONNECT WITH  
THE EMOTIONAL AND FORGET THE  
SUPERFICIAL.

HOPE SABI  
EMBRACES YOU.”

- Lorna de Santos

# alhambra & LORNA DE SANTOS



TIME  
ITS PASSAGE  
WHAT IT LEAVES US

I've always needed time,  
+ time than others.

Observing takes time,  
time and space.

I'm passionate about traveling  
to connect with  
my inner world,  
in which, over time,  
I've been creating and dreaming.

That's why I always need time.

In my place, where I spend +  
time,

nature is always there,  
the landscape,  
its colors.

I've always wanted to design,  
and with Alhambra, I feel this is the  
place.

Our unique textile collection  
based on time.

On how it passes  
and what happens to us,  
to us,  
to the material.

And now to you  
Hope Sabi embraces you.

by Lorna de Santos





12

05

# SABI

INSPIRATION IMAGE GALLERY

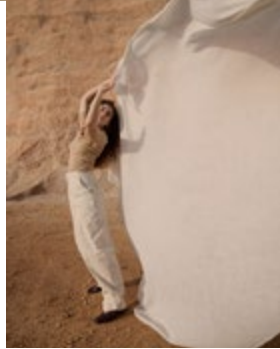
LORNA DE SANTOS



16



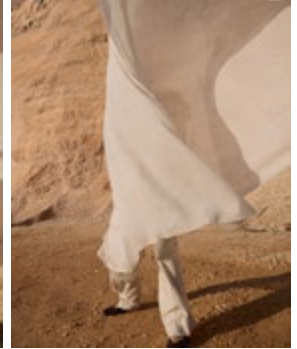
15



02



01



03



08



04



06



07



23



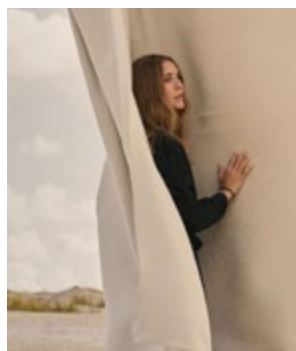
22



24



21



19



18



20



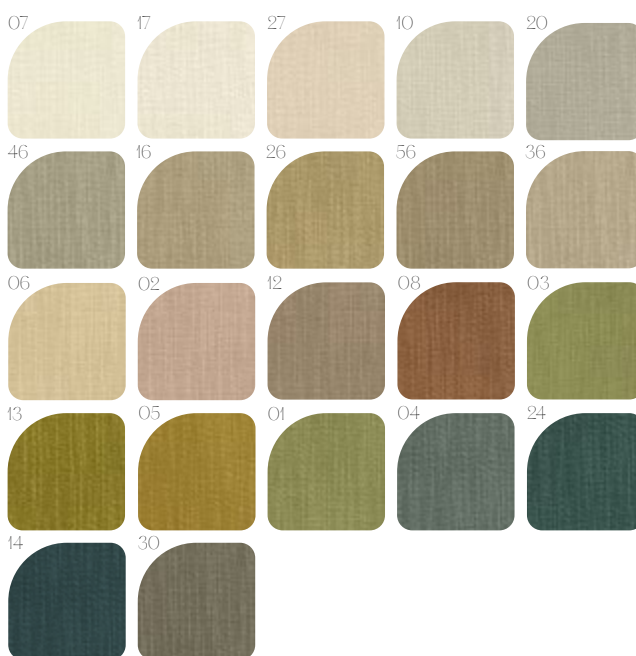
# SALTY

THE BALANCE  
BETWEEN THE  
STRENGTH OF THE  
SEA AND DESIGN

Salty is a fabric that captures the freshness and authenticity of sea nature, inspired by the unique contrasts salt creates on surfaces. This design is characterised by a warp with textured lines, adding depth to its ottoman structure to achieve a balance between rusticity and elegance.

Woven in jacquard and piece-dyed, Salty has a weight of 476 grams and is available in both double and standard width. Its linen, cotton, and viscose composition gives it a robust structure and a refined finish, making it an ideal choice for upholstery and decorative elements that seek functionality and character.

With a palette of 22 colours, Salty transforms spaces, offering a touch of timeless freshness. This design pays tribute to the connection with the sea, inviting serenity and the strength of natural elements into the heart of a home.



52% LINEN, 39% COTTON, 9% VISCOSE

Width: 150-300 cm - 59-118 in | Weight: 476 g/m<sup>2</sup> - 14.0 oz/yd<sup>2</sup>

Martindale: 20,000 cycles

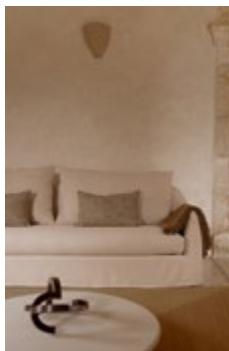


FR UPON REQUEST SELVEDGE | ORILLO  
RAIL ROADED | SENTIDO TRAMA

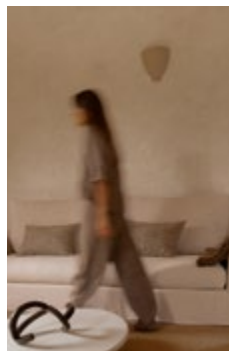
# SALTY

IMAGE GALLERY  
FROM THE COLLECTION

01



02



03



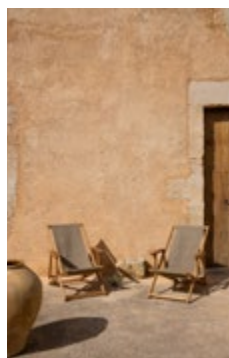
04



05



06



07

