



LIZZO

New Collections '25



It is said that a brand is revealed through the tone and voice it chooses to tell its story. At Lizzo, our voice is more than just a sound, it is a melody woven from threads of art and passion, breathing life into every creation.

From the very beginning, we have sought to express ourselves through beauty, as a profound reflection of who we are and what we create. Our fabrics are not merely materials, they are living canvases, crafted with the intention of becoming works of art in their own right. They inspire us, uplift us, and speak in their own silent language, conveying emotions and telling stories.

That is why we call them “fabrics with soul”, because within each fibre lies the essence of our creativity.



## Fabrics Full of Character with an Exotic Flair

This collection pays tribute to the beauty of **Terai**, a unique enclave of the Himalayas. These exceptional fabrics capture the colours and refined themes of this ecoregion, subtly evoking the exotic essence of animal motifs and the richness of nature.

At the forefront of the latest trends, the designs in this collection offer endless creative possibilities, becoming key elements to infuse character and style into any setting. Exquisite embroideries, velvets, and exclusive jacquards are masterfully combined in a symphony of textures and patterns of high decorative value.





**Bubo** takes inspiration from the plumage of the Nepalese owl, reinterpreting its nuances and textures in an embroidery rich in visual depth.

**Bengala** is an abstract interpretation of the Bengal tiger's coat, transforming its distinctive patterns into a visually striking design. Its texture plays with subtle contrasts, adding dynamism and sophistication.





**Elephas** emulates the texture of elephant skin, reinterpreted with a modern sensibility in tune with current trends. Its subtle relief and depth add character and distinction to curtains, upholstered pieces, and other decorative accents.

**Yak** creates a dynamic visual effect through its two-tone interplay of volumes, translating its texture into a bold and impactful design.





**Adina** captures the beauty of the flora flourishing in the forests of Terai, weaving its essence into a unique and elegant texture. Its captivating harmony of reliefs blends satin fantasy threads with chenille, creating a refined contrast that adds depth and finesse.





**Corbett** is a jacquard featuring a figurative design that captures the richness of Terai's landscapes and wildlife. Its cotton and wool composition lends a soft yet structured texture with a distinctive presence.







## Natural Fibres Transformed into Upholstery Texture

This collection is a tribute to craftsmanship and the art of handmade creation, drawing inspiration from the renowned **Tabriz** carpets. Crafted primarily from natural fibres such as jute, hemp, and cotton, this upholstery fabric embodies the richness and dedication of artisanal tradition.

Available in a refined palette of 12 colours, this texture is the perfect choice for those looking to incorporate authenticity and contemporary style into their compositions, crafting unique atmospheres that convey personality and sophistication.



**Tabriz** features a unique, character-rich texture that offers not only a tactile experience but also creates a visually inviting aesthetic with a rustic charm.







## Elegant Drapes with Subtle Mysticism

**Epic**, a new sheers collection inspired by the grandeur of classical legends woven in time. Masterpieces that transform spaces with their elegant drapes and subtle mysticism, bringing a timeless grace to every setting.

Natural fibres such as linen converge with textile innovation, resulting in a versatile collection that also features an outdoor reference. Like the reflection of an ancient tale, the sheers and curtains in this collection have been crafted to enrich the story of the spaces they inhabit.





**Medea** is an In&Out net curtain, designed to enhance both interior and exterior spaces. Crafted from 100% solution dyed acrylic, the most advanced composition for outdoor use, Medea offers exceptional performance against external elements, ensuring its beauty remains unaltered over time.





**Casandra** embodies the beauty of nature with a rustic yet sophisticated character. This linen curtain combines threads of varying thicknesses that intertwine organically, creating a textured surface with volume and a subtle movement.

**Areta** is an ode to classical beauty. Its design features an abstract pattern of interwoven threads on a satin base, creating a delicate interplay of contrasts that captures light with refinement.





**Cibeles** is the essence of the ethereal, a sheer that evokes the caress of the breeze, the sacred, the intangible. Its lightweight fabric flows with natural elegance, veiling spaces in a dance of movement and light.

**Nona** is a silk-effect linen curtain in neutral tones that pays homage to the art of weaving. Its organic and natural appearance enhances an enveloping presence.



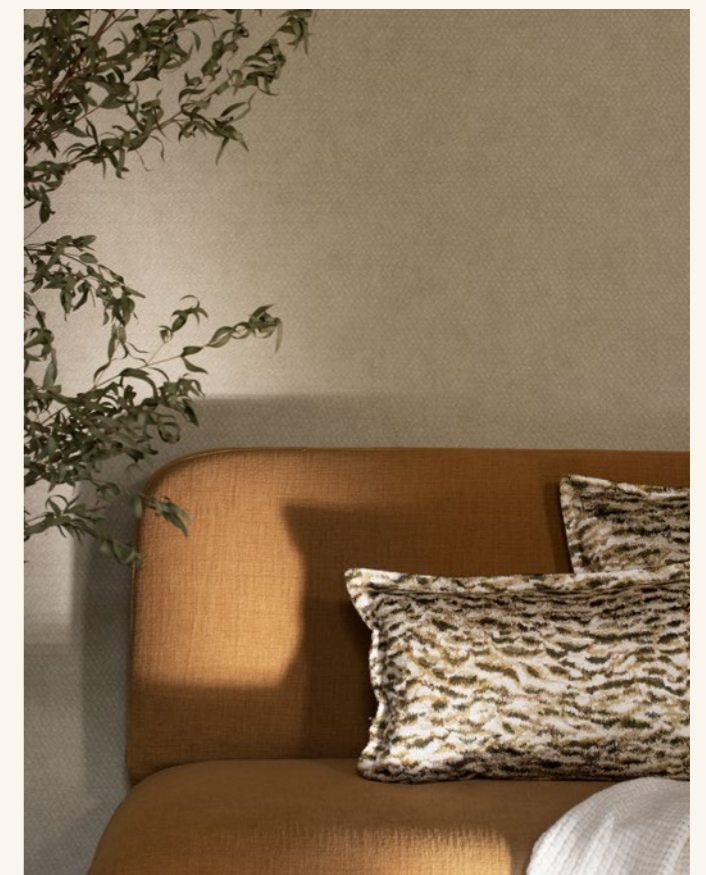




## Textures that Infuse Walls with Art

Texture transcends mere decoration to become an element that transforms spaces. With this principle in mind, **Textures I** emerges, a collection of vinyl wallpapers that elevates the concept of wallcovering to a new dimension, seamlessly blending aesthetics and functionality with meticulously crafted design. Inspired by the richness of textiles and the precision of artisanal detail, this collection adds depth and distinction, turning walls into an essential feature of interior design.

More than just a wallcovering, Textures I offers a versatile and sophisticated solution, perfectly suited to both residential and contract projects. Its vinyl composition ensures moisture resistance and easy maintenance, while its textured finish brings extraordinary decorative value. A collection conceived for those who seek timeless elegance without compromising on performance.



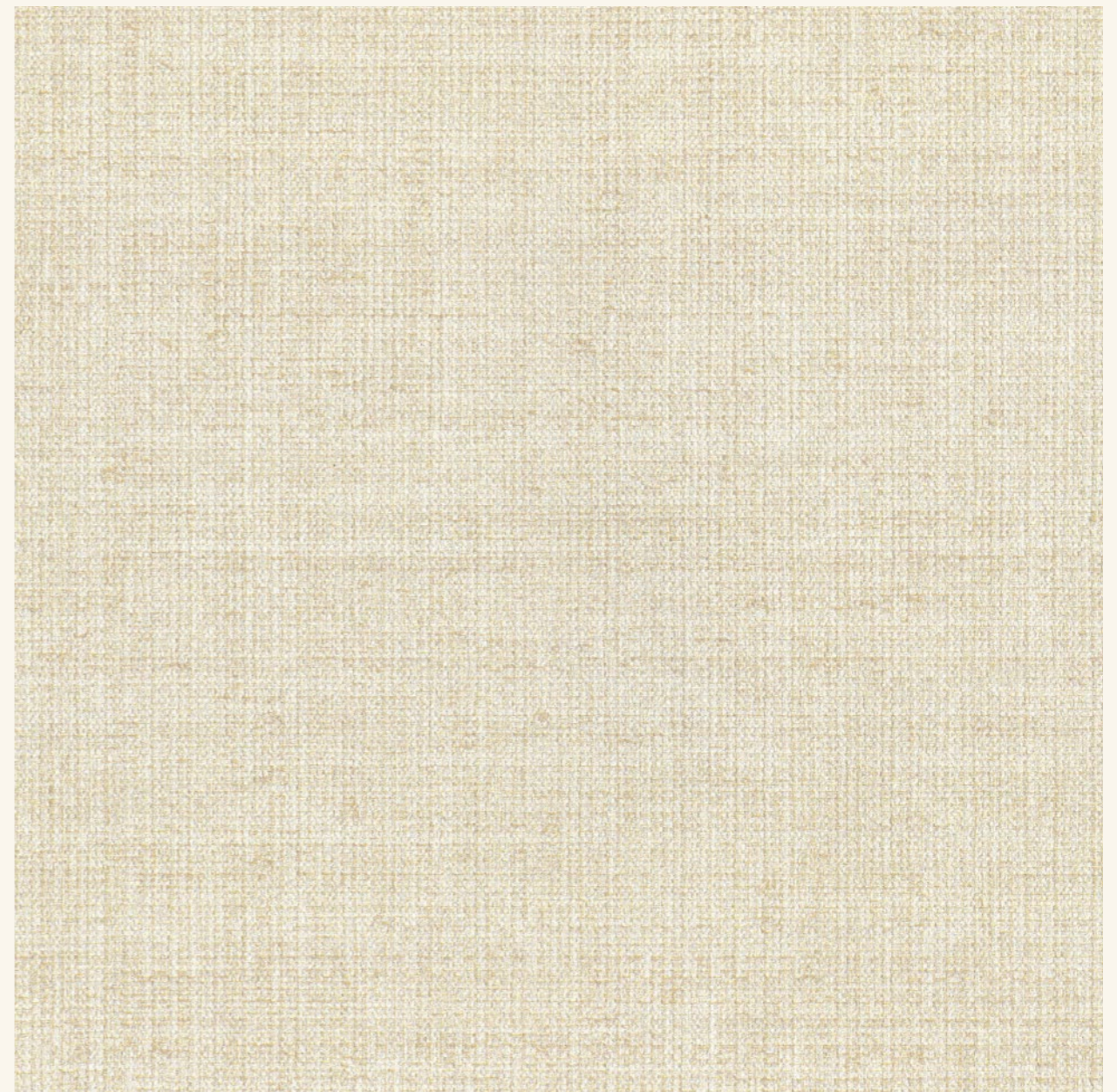
**Cesto** is inspired by the meticulous craftsmanship of woven baskets, reinterpreting tradition in a wallcovering where texture and design intertwine in a dance of refinement and sophistication.





**Tappeto** transforms walls into textured, voluminous canvases. Inspired by the noble tradition of handwoven carpets, its delicate relief recalls the artisanal weave, adding a subtle depth that gently envelops interiors in a serene, timeless aura.

**Arazzo** evokes the essence of ancient tapestries, adorning walls with the softness and refinement of a timeless design. Its exquisite texture and delicate weave create a surface of understated elegance.





Technical Sheets



ADINA

TERAI Collection

Organically patterned semi-lustrous jacquard

Width	Repeat (cm)	Martindale	Composition
145 cm	W74 x L164	N/A	30%CO 30%CV 30%PES 10%PA

Suitable for



FR UPON  
REQUEST



040607

BENGALA

TERAI Collection

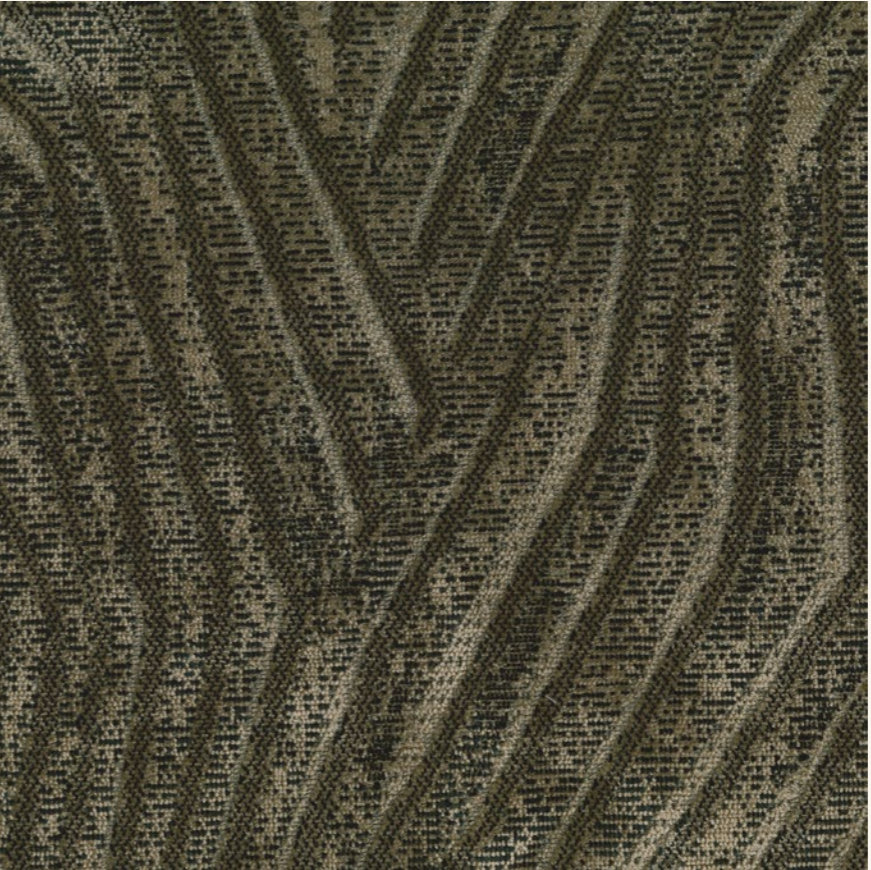
Velvet jacquard

Width	Repeat (cm)	Martindale	Composition
138 cm	W68 x L46	70.000	Global: 76%CV 21%CO 2%PES Pile: 100%CV

Suitable for



FR UPON  
REQUEST



0103050609


# BUBO


TERAI Collection


Luxury embroidery on a cotton base

Width	Repeat (cm)	Martindale	Composition
140 cm	W37,5 x L35	25.000	51%CO 42%CV 7%PES

Suitable for





FR UPON REQUEST



010304

# CORBETT

TERAI Collection

Iconic jacquard

Width	Repeat (cm)	Martindale	Composition
134 cm	W67 x L66	20.000	79%CO 19%WO 2%PA

Suitable for





FR UPON REQUEST



01030408


ELEPHAS


TERAI Collection


Laminated jacquard

Width	Repeat (cm)	Martindale	Composition
140 cm	N/A	40.000	50%CO 50%PES

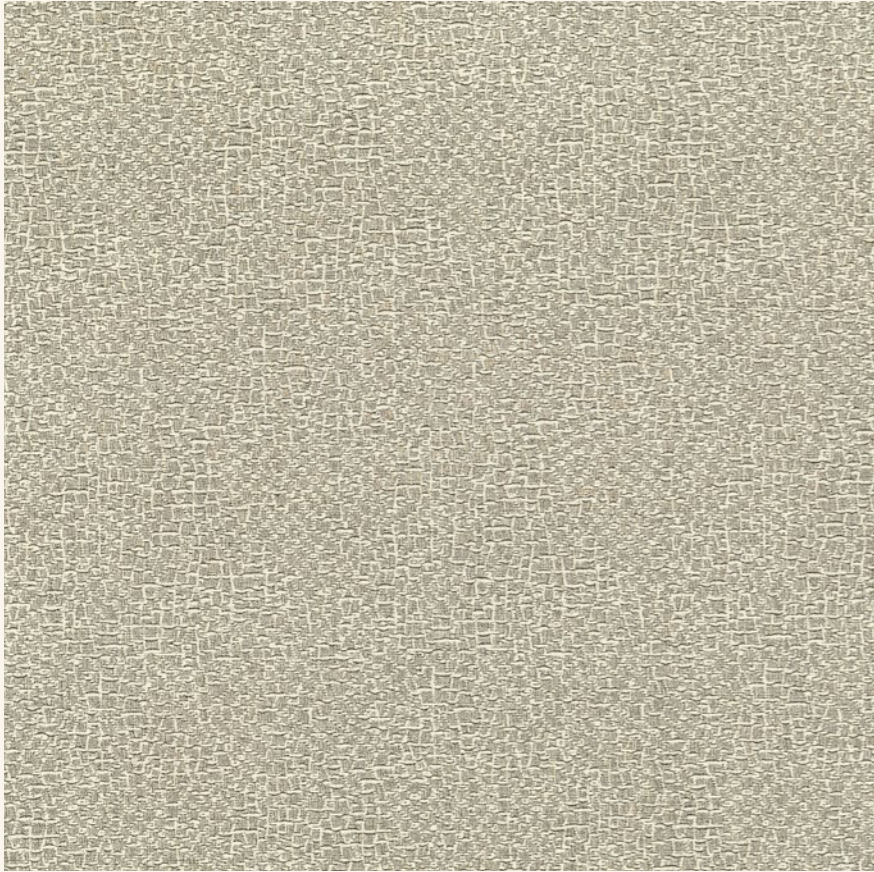
Suitable for







FR UPON  
REQUEST



YAK

TERAI Collection

Bicolour textured jacquard

Width	Repeat (cm)	Martindale	Composition
140 cm	W35 x L55	30.000	40%CO 35%CV 23%JU 2%OF

Suitable for





FR UPON  
REQUEST




# TABRIZ


TABRIZ Collection


## Natural upholstery texture

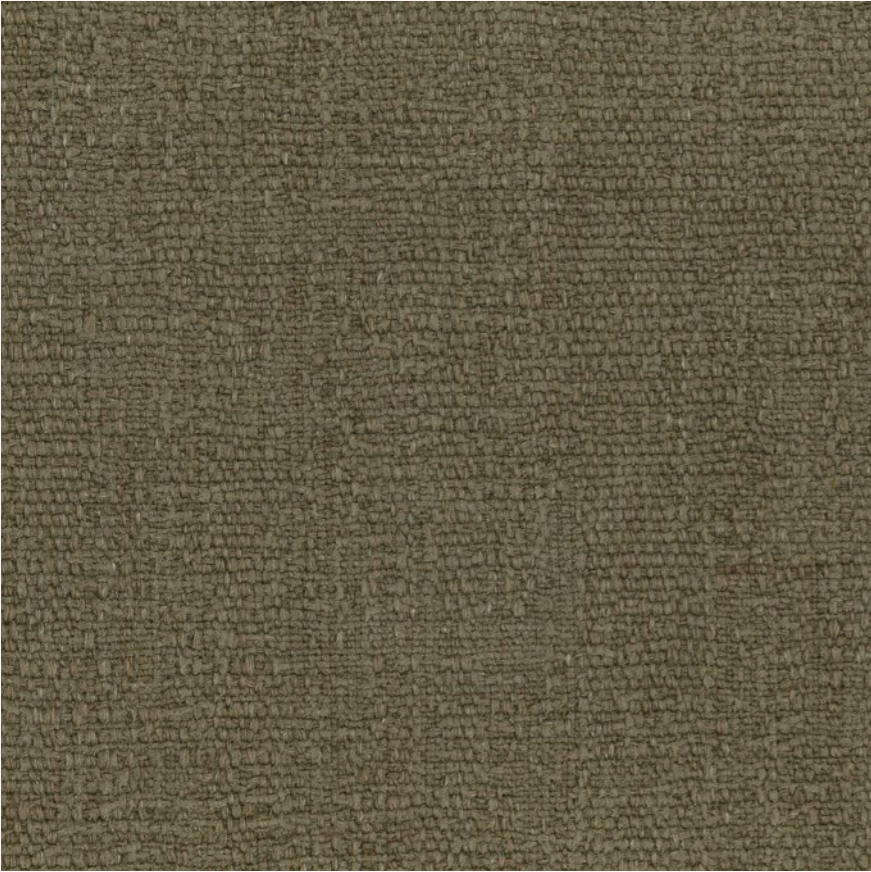
Width	Repeat	Martindale	Composition
140 cm	N/A	35.000	40%JU 35%HE 12%CO 10%CV 3%PA

Suitable for





FR UPON  
REQUEST



  
01

  
02

  
03

  
04

  
05

  
06

  
07

  
08

  
11

  
13

  
15

  
16

# ARETA

EPIC Collection

## Elegant satin jacquard curtain

Width	Repeat	Weight	Composition
320 cm	N/A	280 g/m <sup>2</sup>	40%LI 33%CU 27%CO

Suitable for







FR UPON  
REQUEST



  
01

  
06

  
07

  
16

CASANDRA

EPIC Collection

Textured linen curtain

Width300 cm

RepeatN/A

Weight390 g/m²

Composition93%LI 7%PAN

Suitable for

FR UPON REQUEST



CIBELES

EPIC Collection

Light & soft sheer

Width322 cm

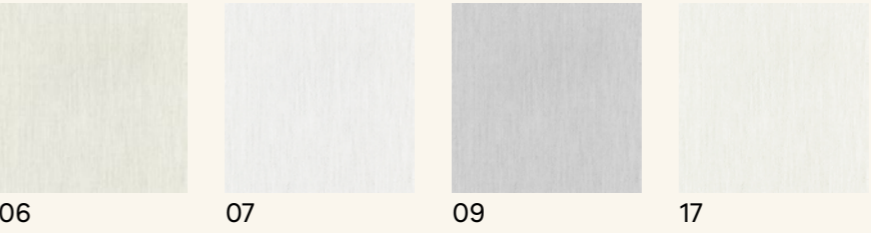
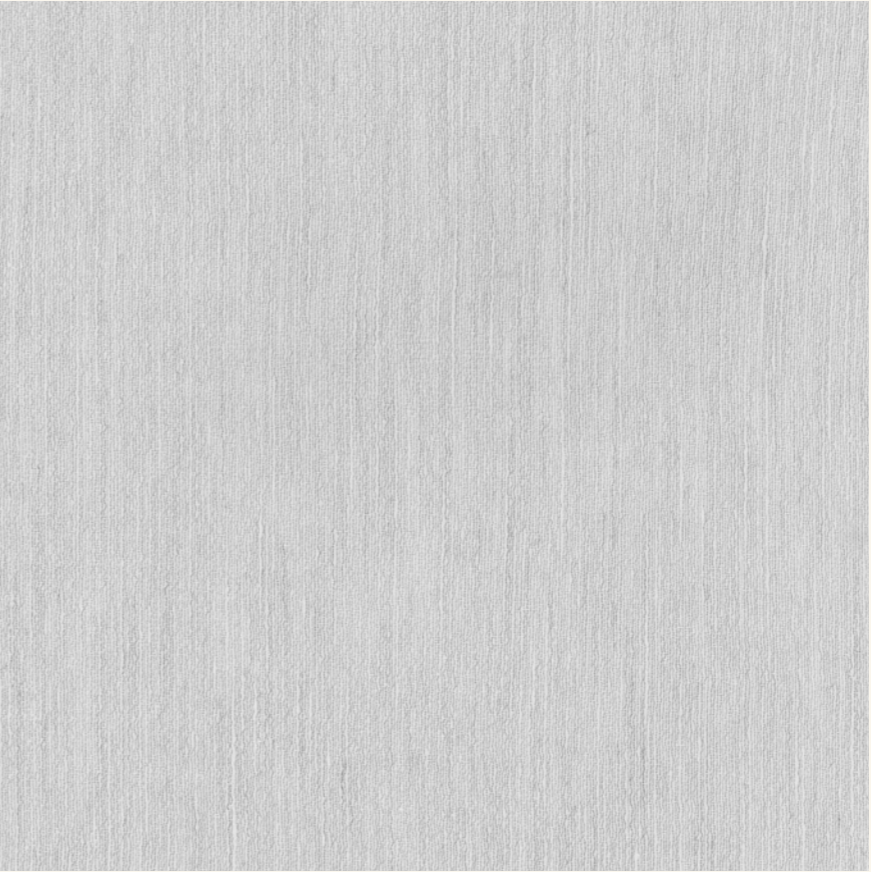
RepeatN/A

Weight50 g/m²

Composition58%PES 24%LI 18%CLY TENCEL

Suitable for

FR UPON REQUEST



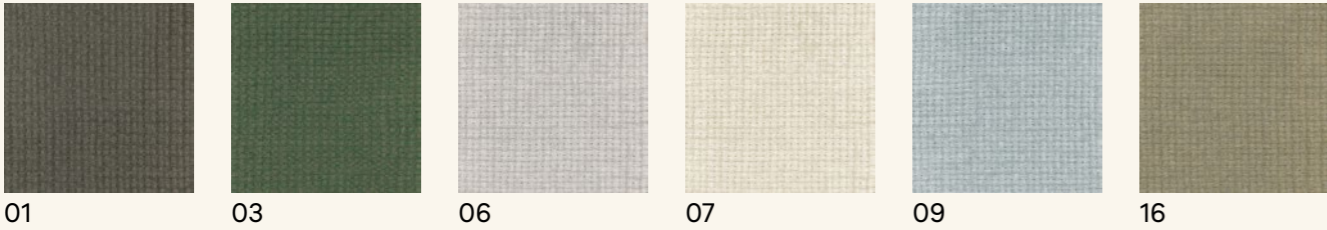
MEDEA

EPIC Collection

Outdoor net curtain

Width	Repeat	Weight	Composition
290 cm	N/A	550 g/m²	100% SOLUTION DYED ACRYLIC

Suitable for



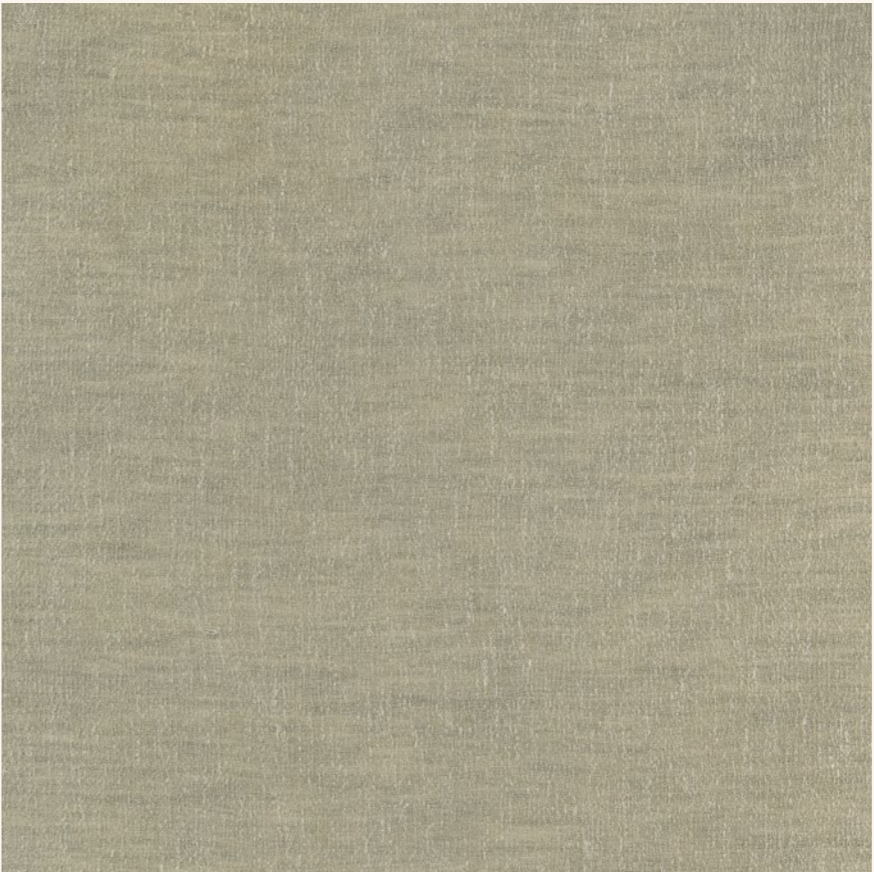
NONA

EPIC Collection

Silk look linen sheer

Width	Repeat	Weight	Composition
300 cm	N/A	150 g/m²	72%LI 28%PES

Suitable for





Wallpapers

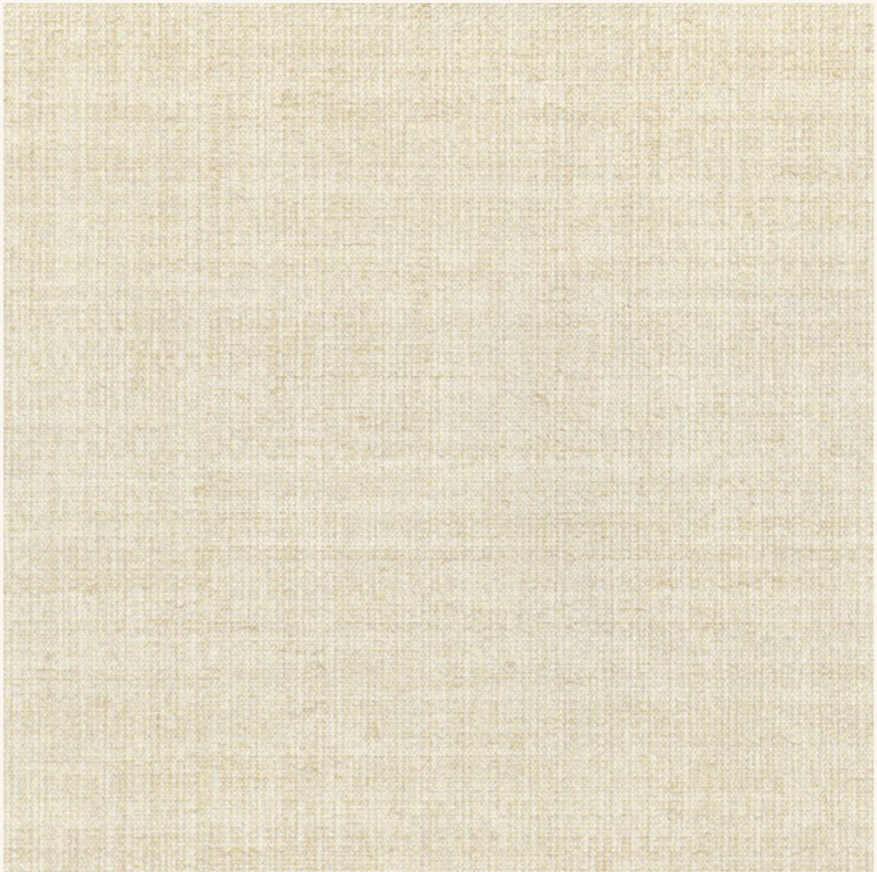
# ARAZZO

TEXTURES I Collection

Linen effect textured vinyl wallpaper

Roll Width	Roll Lenght	Repeat (cm)	Weight
70 cm	10 m	W70 x L49	400 g/m <sup>2</sup>

Use & Care



01

05

06

07

09

11

16

19



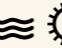
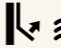

# CESTO

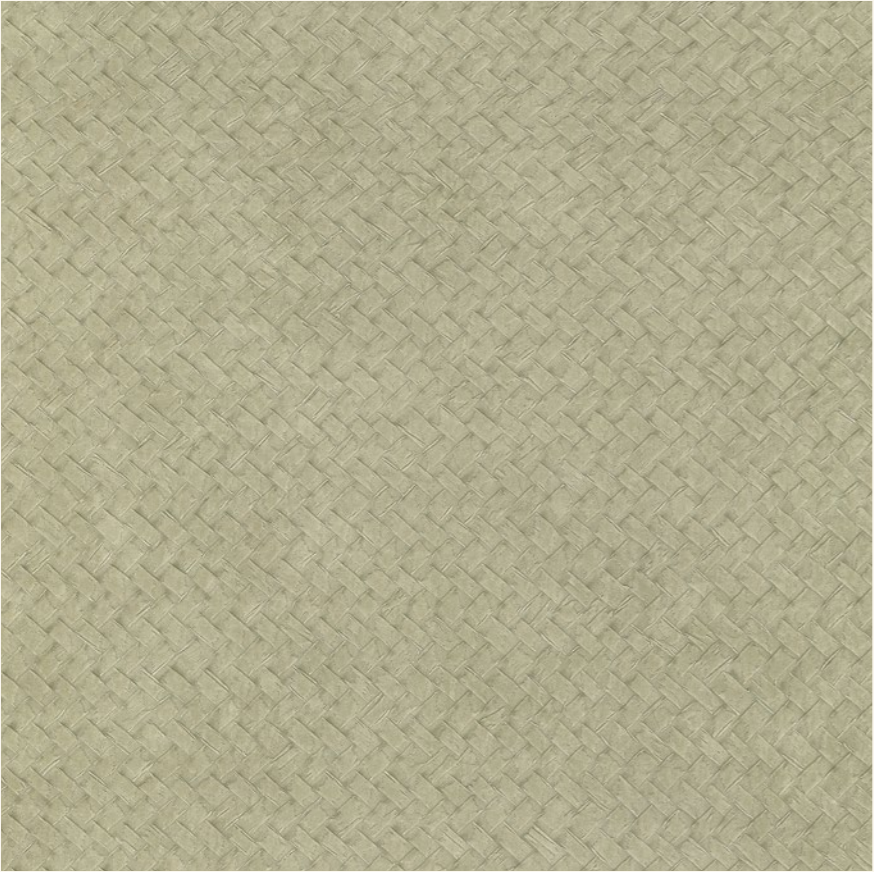
TEXTURES I Collection


Basket weave textured vinyl wallpaper


Roll Width	Roll Lenght	Repeat (cm)	Weight
70 cm	10 m	W70 x L70	480 g/m <sup>2</sup>


Use & Care








  
01


  
03


  
07

  
16

  
29

  
21540

  
21541

  
21542



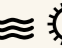
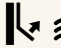

# TAPPETO

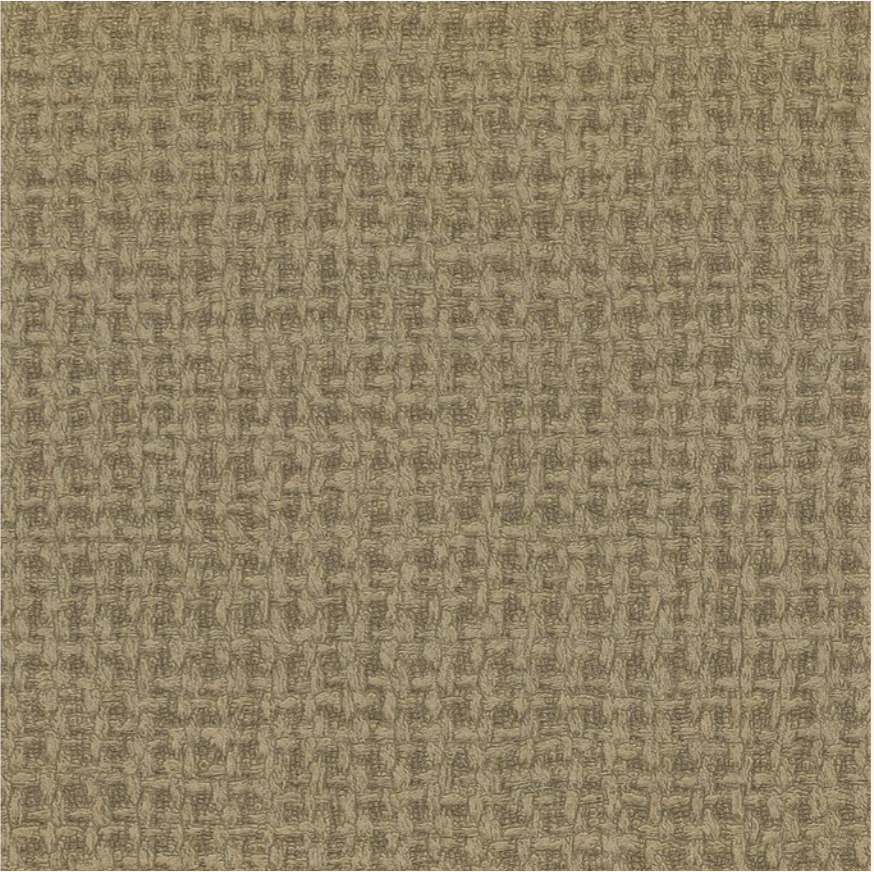
TEXTURES I Collection


Rug-inspired textured vinyl wallpaper


Roll Width	Roll Lenght	Repeat (cm)	Weight
70 cm	10 m	W70 x L1,5	540 g/m <sup>2</sup>


Use & Care







  
01


  
02


  
03

  
06

  
07

  
09

  
16

  
17

## EUROPE

### LONDON · LIZZO UK

G5 The Design Centre Chelsea Harbour  
Ground Floor Centre Dome, SW10 0XE  
London, United Kingdom  
Ph. +44 20 7823 3456  
london@lizzo.net

### MADRID · LIZZO

C/Castelló, 61, 28001, Madrid, Spain  
Ph. +34 914 260 982  
madrid@lizzo.net

### AMSTERDAM · LOGGERE WILPOWER

Zuidereinde 49, 1243 KL 'S-Graveland  
Amsterdam, The Netherlands  
Ph. +31 35 656 5200  
office@loggerewilpower.com

### ATHENS · BDA

16 Charitos Str., Kolokani  
10675, Athens, Greece  
Ph. +30 35 656 5200  
operations@bda.gr

### BRUSSELS · BRUXELLES INTEDE

Quai Des Péniches, Akenkaai 52A  
1000, Brussels, Belgium  
Ph. +32 2 513 02 61  
info@intede.be

### FRANCE · STANISLAS CHAPUIS

Ph. + 33 (0)6 31 95 95 21  
schapuis@lizzo.net

### ISTAMBUL · FORTY THREE DESIGN

Akat Mahallesi Yildirim Oguz Goker Sokak 5  
Gazeteciler Sitesi, A3-2 Blok No 8  
34335 Besiktas/Istanbul, Turkey  
Ph. +90 533 647 00 98  
nihalsay@43design.com.tr

### LISBOA · BARREIROS & BARREIROS

Rua Sacadura Cabral, 41B, 1495-702  
Cruz Quebrada, Dafundo, Portugal  
Ph.: +351 213 957 744  
showroomlisboa@barreirosebarreiros.com

### MILAN · ELITIS, SRL

Via Savona, 97, 20144, Milan, Italy  
Ph. +39 02 4229 6677  
info@ELITIS.it

### MUNICH · GEBRÜDER WEISHÄUPL

Schwanthalerstrasse 49, DE 80336  
München, Germany  
Ph. +49 89 54424862  
iboehm@weishaeupl-textil.de

### OPORTO · BARREIROS & BARREIROS

Rua Fonte da Luz 141, 4150-337  
Porto, Portugal  
Ph. +351 225 320 224  
showroomporto@barreirosebarreiros.com

### PRAGUE · MARTIN SULA

Vila Bezovka, Prokopova 2a/2849  
130 00, Prague 3, Czech Republic  
Ph. +420 604 632 113  
martin@show-room.cz

### STOCKHOLM · MADERO INTERIOR

Kommendörsgatan 20B, 114 48  
Stockholm, Sweden  
Ph. +46 70 980 66 32  
lizzosweden@madero.se

## AMERICA

### CHICAGO · KRAVET

222 Merchandise Mart Plaza, Suite 6-121  
Chicago, IL 60654  
Ph. +1 312.527.0505  
chicago.showroom@kravet.com

### DALLAS · KRAVET

1025 North Stemmons Freeway  
Suite 720, Dallas, TX 75207  
Ph. +1 214.761.9193  
dallas.showroom@kravet.com

### DENVER · KRAVET

595 South Broadway, Suite 101 E  
Denver, CO 80209  
Ph. +1 303.733.3470  
denver.showroom@kravet.com

### HOLLYWOOD · KRAVET

3040A North 29th Avenue  
Hollywood, FL 33020  
Ph. +1 954.920.4735  
hollywood.showroom@kravet.com

### HOUSTON · KRAVET

5120 Woodway, Suite 150  
Houston, TX 77056  
Ph. +1 713.629.5885  
houston.showroom@kravet.com

### LOS ANGELES · KRAVET

8687 Melrose Avenue, Suite B690  
Los Angeles, CA 90069  
Ph. +1 310.659.7100  
losangeles.showroom@kravet.com

### NEW YORK · KRAVET

D&D Building 979 Third Avenue  
Suite 1202, New York, NY 10022  
Ph. +1 212.688.0444  
newyork.showroom@leejofa.com

### TORONTO · KRAVET

117 Tycos Drive, Toronto  
ON M6B 1W3  
Ph. +1 416.921.1262  
toronto.showroom@kravetcanada.com

### KRAVET CUSTOMER SERVICE

250 Crossways Park Drive  
Woodbury, NY 11797  
Ph. +1 800.645.9068  
customer.service@kravet.com

### MEXICO · ARTELL

Prado Norte 420, Nivel 2, Colonia Lomas  
de Chapultepec, 11000 - CDMX  
+52 55.2623.0290  
loft@artell.com.mx

## ASIA

### BEIJING · EUROART

Jianke Binguan, A2 Xinghua Road,  
Anwai Street, Chaoyang District  
100013, Beijing, China  
Ph. +86 010-84270361  
marketing@china-euroart.com

### DOHA · TDD FURNISHING TRADING WLL

H&A Building, 7th floor, Building 90, Ras  
Abu Abboud St., Old Al Ghanim, Qatar  
Ph. +974 4435 7339 / +974 5058 4484  
sales@tddqatar.com

### DUBAI · TDD FURNISHING TRADING LLC

Dubai Design District, PO Box 33975  
Office NO 105B, Building 7  
United Arab Emirates  
Ph. +971 4 584 5178  
office@tddfze.com

### HONG KONG · VERANDA

Chung Mei Centre, Unit A4/ F, Block A  
15-17 Hing Yip Street  
Kwun Tong, Hong Kong  
Ph. +852 2868 9728  
jean@veranda.com.hk

### SHANGHAI · EUROART

3/A, NO 209, Wending Rd.  
Xuhui Dist., 200030  
Shanghai, China  
Ph. +86 021-34612162  
marketing@china-euroart.com

### SHENZHEN · EUROART

RM 813, Yizhan Center II, Zhanyi Rd.  
Luohu Dist, Shenzhen, China  
Ph. +86 0755-82320030  
marketing@china-euroart.com

### TOKYO · TOMITA TOKYO

2-2-1 Kyobashi Edogrand 1F  
Kyobashi, Chuo-ku, 104-0031  
Tokyo, Japan  
Ph. +81 3.3273.7500  
info@tominet.co.jp

## OCEANIA

### AUCKLAND · DIVA INTERNATIONAL

16 Railway Street  
Newmarket, 1023  
Auckland, New Zealand  
Ph. +64 9 523 0625  
andrew@diva.co.nz

### MELBOURNE · WESTBURY TEXTILES

503 High Street  
Prahran, VIC 3181  
Melbourne, Australia  
Ph. +61 3 9529 6211  
dianne@westburytextiles.com

### SYDNEY · WESTBURY TEXTILES

15-19 Boundary St.  
Ruchcutters Bay NSW 2011  
Sydney, Australia  
Ph. +61 2 9380 6644  
nsw@westburytextiles.com

## AFRICA

### CUREPIPE · NATHALIE HARDY INTERIORS

270 Royal Road  
Curepipe, Mauritius  
Ph. +679 698 9772  
nh@nathaliehardy.com

## HEAD OFFICE

### SPAIN · ALICANTE

C/ Del Rublo, 63 P.I. Las Atalayas  
03114 Alicante, Spain  
Ph. +34 965 932 235  
lizzo@lizzo.net  
lizzo.net





[lizzo.net](http://lizzo.net)