



PEPE PEÑALVER

new collections '25



At Pepe Peñalver, we create fabrics that tell stories in every corner of the world. This time, our new collections have led us to imagine a new setting in the Land of the Rising Sun, where tradition and modernity intertwine in perfect harmony.

Inspired by Japan's rich cultural heritage, we have designed fabrics intended to create unique pieces that can transform the spaces they inhabit. They are not mere bystanders, but the protagonists of the story.

We have intentionally lost ourselves in this idea to discover new trends in textures, patterns, and colors that give meaning to the six new collections.





Inspired by the iconic district of Shibuya, this collection reflects the meeting of modernity and tradition. A tribute to the two most representative faces of Japan, whose contrasts and harmonies have been the source of inspiration for these designs.

Shibuya is the new thematic collection by Pepe Peñalver. Fabrics that stand out, reflecting the fusion of tradition and avant-garde, in a modern interpretation of Japanese aesthetics.

From indoor and outdoor upholstery textures to striking jacquards that seamlessly combine versatility with design.

# shibuya

unique textures  
brimming with contrasts









# minka

Inspired by the rooftops of traditional Japanese houses, this herringbone jacquard celebrates the nobility of ancient craftsmanship with a refined and contemporary vision.





# sora

Sora is the new outdoor fabric by Pepe Peñalver. Inspired by open spaces and Japanese gardens, its subtle texture evokes the serenity of a clear sky.







# tokyo

This exquisite jacquard features a design based on by the traditional ukiyo-e pictorial style and the vibrant glow of urban neon lights.





# yuzu

Yuzu embodies the meticulous beauty of Japanese design, where small, precise geometric patterns bring a refreshing vibrancy.





Versatile upholstery fabric inspired by the weave of traditional Japanese flooring, exuding warmth and comfort.

With a broad palette of 14 colours and 35,000 Martindale cycles, this fabric offers exceptional versatility, making it the perfect choice for upholstery, curtains, and decoration.

Furthermore, it is water-repellent and primarily made from natural fibres and recycled cotton.

tatami  
water-repellent  
welcoming texture





# tatami

A welcoming texture brimming with possibilities that evokes the seamless harmony between traditional Japan and contemporary decorative styles.



This collection of sheers and curtains pays tribute to the harmony between the elements that dress a home.

Nagare means 'the flowing current', a concept that reflects the graceful drape of the fabrics in this collection, inspired by natural elements such as the ever-changing form of water or light filtering through tree leaves. Each fabric is designed to integrate seamlessly into the spaces it inhabits.

The use of recycled fibres in two of its designs underscores the brand's commitment to sustainability. With soft drapes and organic textures, Nagare's sheers bring serenity and balance without compromising cutting-edge design.

# nagare

## sheers and curtains

## with organic inspiration







# kami

This open-weave sheer with a geometric design merges modern style with a rustic aesthetic. Its texture and natural fluidity allow light to glide through its threads with unparalleled softness.







# mori

A delicate sheer whose weightless creates spaces where light takes centre stage. Its subtle weave evokes the stillness of the forest, where rays filter through the leaves.



# niwa

Its lightness and subtly marled weave create a delicate sheer that filters light naturally, with a soft drape that brings continuity and calm to interiors.







# yume

An exclusive curtain with an organic appearance and fluid drape, enveloping spaces in an atmosphere of tranquillity and sophistication.





# hakone

## double-width FR blackout curtain

Hakone is a double-width 100% blackout fabric, water-repellent and FR inherent, properties that make it an unmissable choice for contract projects.

Inspired by the unique city of Hakone, where thermal spring waters meet the majestic views of Mount Fuji, this fabric evokes the beauty of Japanese nature.

In addition to its ability to create warm and tranquil environments, it features a soft-to-the-touch texture and a palette of 17 colours, allowing Hakone to seamlessly blend into any style, making it especially suited for curtains and decoration.





# hakone

The perfect option for dressing both residential and contract spaces seeking the ideal balance between functionality and elegance.





This collection is inspired by the picturesque village of Onna, in Okinawa, a place that embodies the serenity and beauty of Japan's coastal landscapes.

With 170,000 Martindale cycles, Onna stands out for its exceptional durability, without compromising on a soft and pleasant touch.

Its double width makes it an ideal choice for upholstery, curtains, and decoration, while its wide palette of 18 colours opens up a range of possibilities to create stylish environments.

# onna

versatile fabric for  
drapery and upholstery









# onna

A versatile fabric that blends aesthetics and functionality, infusing the essence of Japanese nature into interiors.



Nikko is a place where Japanese tradition and nature intertwine in perfect harmony. This concept serves as the inspiration for this new 100% recycled upholstery collection, reflecting our growing commitment to sustainability.

With 150,000 Martindale cycles, it offers a robust and durable texture that remains warm and welcoming.

Its easy clean technology, along with its stain and soil resistance properties, ensures effortless maintenance, while its durability and broad colour palette make Nikko a highly functional and versatile choice.

# nikko

100% recycled  
upholstery collection



# nikko

Nikko features 19 shades, ranging from neutral tones like browns and greys to forest green, deep blue, and terracotta, hues that reinterpret the elements of Japan's natural landscape.



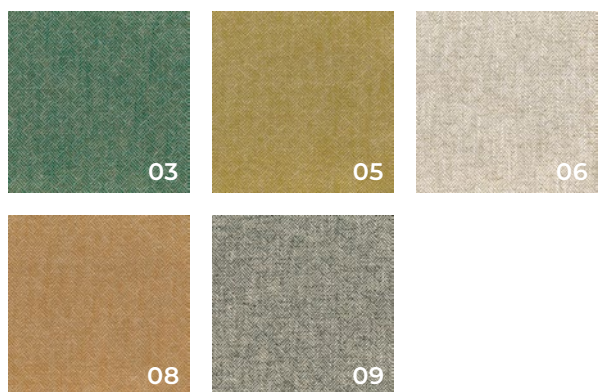
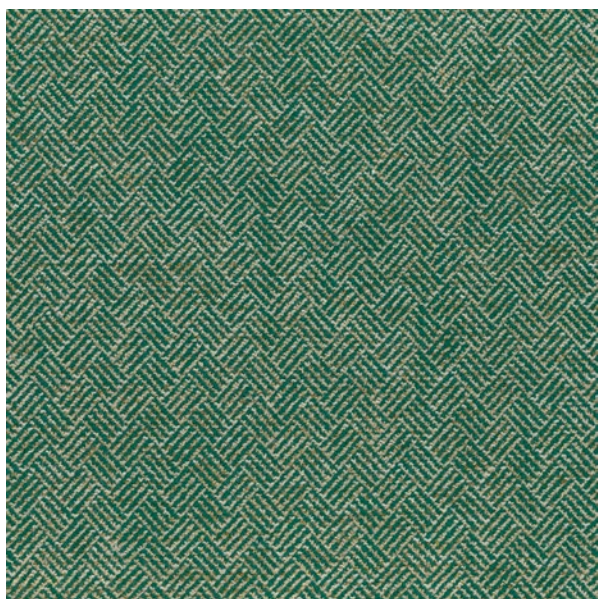


technical  
sheets





minka



width  
137 cm

composition  
57%PES 37%CO 6%LI

repeat  
W 2,5 x L 2,5 cm

martindale  
50.000

suitable for



sora



width  
140 cm

composition  
100%PP

repeat  
N/A

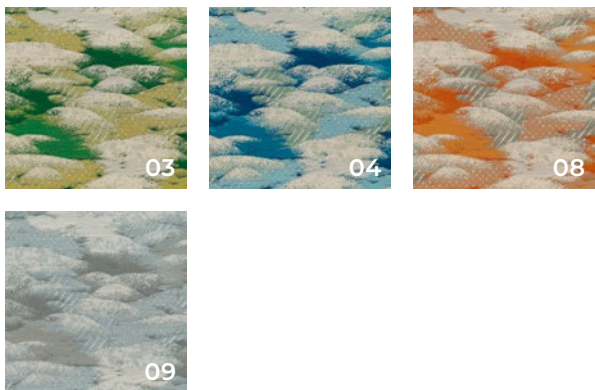
martindale  
70.000

suitable for





tokyo



width  
138 cm

composition  
94%CV 6%PES

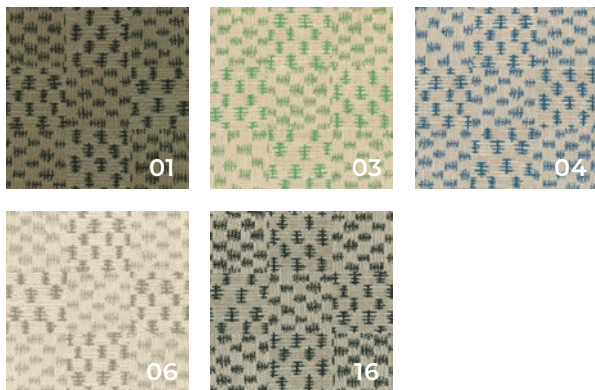
repeat  
W 91,5 x L 59,5 cm

martindale  
20.000

suitable for



yuzu



width  
138 cm

composition  
39%CO 27%CV 13%LI 11%PAN 10%PES

repeat  
W 35 x L 33,5 cm

martindale  
40.000

suitable for





tatami

WATER  
REPELLENT

kami



width  
140 cm

composition  
41%CV 25%CO RCY 20%LI 14%PES

repeat  
N/A

martindale  
35.000

suitable for



width  
315 cm

composition  
62%PES RCY 27%PAN 11%PES

repeat  
W 6 x L 1,5 cm

weight  
350 gr

suitable for





mori



niwa



width  
300 cm

composition  
60%PES RCY 40%PES

repeat  
N/A

weight  
110 gr

suitable for



width  
315 cm

composition  
59%LI 41%PES

repeat  
N/A

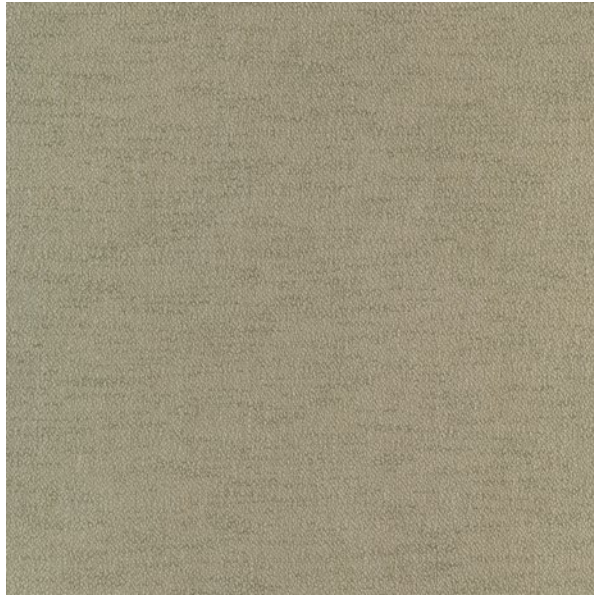
weight  
172 gr

suitable for





yume



width  
290 cm

composition  
100%PES

repeat  
N/A

weight  
300 gr

suitable for



hakone



width  
320 cm

composition  
100%PES FR | 100%BLACKOUT

repeat  
N/A

weight  
340 gr

suitable for



WATER  
REPELLENT  
BLACKOUT



onna



width  
320 cm

composition  
100%PES

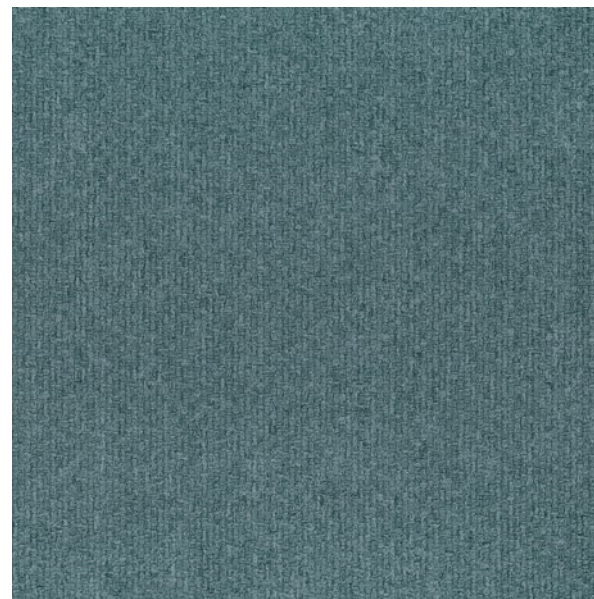
repeat  
N/A

martindale  
170.000

suitable for



nikko



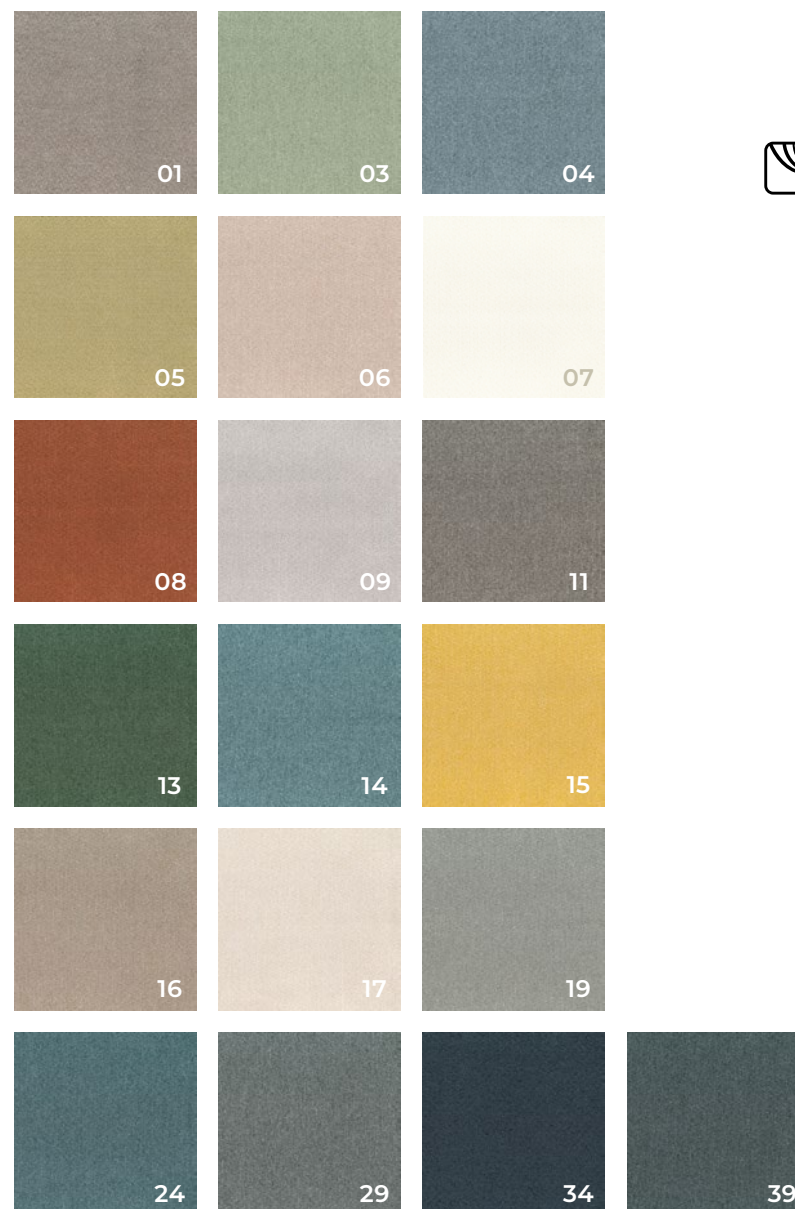
width  
143 cm

composition  
100%PES RCY

repeat  
N/A

martindale  
150.000

suitable for





## EUROPE

### LONDON · LIZZO UK

G5 The Design Centre Chelsea Harbour  
Ground Floor Centre Dome, SW10 0XE  
London, United Kingdom  
Ph. +44 20 7823 3456  
london@lizzo.net

### MADRID · LIZZO

C/Castelló, 61, 28001, Madrid, Spain  
Ph. +34 914 260 982  
madrid@lizzo.net

### AMSTERDAM · LOGGERE WILPOWER

Zuidereinde 49, 1243 KL 'S-Graveland  
Amsterdam, The Netherlands  
Ph. +31 35 656 5200  
office@loggerewilpower.com

### ATHENS · BDA

16 Charitos Str., Kolokani  
10675, Athens, Greece  
Ph. +30 35 656 5200  
operations@bda.gr

### BRUSSELS · BRUXELLES INTEDE

Quai Des Péniches, Akenkaai 52A  
1000, Brussels, Belgium  
Ph. +32 2 513 02 61  
info@intede.be

### FRANCE · STANISLAS CHAPUIS

Ph. + 33 (0)6 31 95 95 21  
schapuis@lizzo.net

### ISTAMBUL · FORTY THREE DESIGN

Akat Mahallesi Yildirim Oguz Goker Sokak 5  
Gazeteciler Sitesi, A3-2 Blok No 8  
34335 Besiktas/Istanbul, Turkey  
Ph. +90 533 647 00 98  
nihalsay@43design.com.tr

### LISBOA · BARREIROS & BARREIROS

Rua Sacadura Cabral, 41B, 1495-702  
Cruz Quebrada, Dafundo, Portugal  
Ph.: +351 213 957 744  
showroomlisboa@barreirosebarreiros.com

### MUNICH · GEBRÜDER WEISHÄUPL

Schwanthalerstrasse 49, DE 80336  
München, Germany  
Ph. +49 89 54424862  
iboehm@weishaeupl-textil.de

### OPORTO · BARREIROS & BARREIROS

Rua Fonte da Luz 141, 4150-337  
Porto, Portugal  
Ph. +351 225 320 224  
showroomporto@barreirosebarreiros.com

### PRAGUE · MARTIN SULA

Vila Bezovka, Prokopova 2a/2849  
130 00, Prague 3, Czech Republic  
Ph. +420 604 632 113  
martin@show-room.cz

### STOCKHOLM · MADERO INTERIOR

Kommendörsgatan 20B, 114 48  
Stockholm, Sweden  
Ph. +46 70 980 66 32  
lizzosweden@madero.se

## AMERICA

### CHICAGO · KRAVET

222 Merchandise Mart Plaza, Suite 6-121  
Chicago, IL 60654  
Ph. +1 312.527.0505  
chicago.showroom@kravet.com

### DALLAS · KRAVET

1025 North Stemmons Freeway  
Suite 720, Dallas, TX 75207  
Ph. +1 214.761.9193  
dallas.showroom@kravet.com

### DENVER · KRAVET

595 South Broadway, Suite 101 E  
Denver, CO 80209  
Ph. +1 303.733.3470  
denver.showroom@kravet.com

### HOLLYWOOD · KRAVET

3040A North 29th Avenue  
Hollywood, FL 33020  
Ph. +1 954.920.4735  
hollywood.showroom@kravet.com

### HOUSTON · KRAVET

5120 Woodway, Suite 150  
Houston, TX 77056  
Ph. +1 713.629.5885  
houston.showroom@kravet.com

### LOS ANGELES · KRAVET

8687 Melrose Avenue, Suite B690  
Los Angeles, CA 90069  
Ph. +1 310.659.7100  
losangeles.showroom@kravet.com

### NEW YORK · KRAVET

D&D Building 979 Third Avenue  
Suite 1202, New York, NY 10022  
Ph. +1 212.688.0444  
newyork.showroom@leejofa.com

### TORONTO · KRAVET

117 Tycos Drive, Toronto  
ON M6B 1W3  
Ph. +1 416.921.1262  
toronto.showroom@kravetcanada.com

### KRAVET CUSTOMER SERVICE

250 Crossways Park Drive  
Woodbury, NY 11797  
Ph. +1 800.645.9068  
customer.service@kravet.com

### MEXICO · ARTELL

Prado Norte 420, Nivel 2, Colonia Lomas  
de Chapultepec, 11000 - CDMX  
+52 55.2623.0290  
loft@artell.com.mx

## ASIA

### BEIJING · EUROART

Jianke Binguang, A2 Xinghua Road,  
Anwai Street, Chaoyang District  
100013, Beijing, China  
Ph. +86 010-84270361  
marketing@china-euroart.com

### DOHA · TDD FURNISHING TRADING WLL

H&A Building, 7th floor, Building 90, Ras Abu  
Abboud St., Old Al Ghanim, Qatar  
Ph. +974 4435 7339 / +974 5058 4484  
sales@tddqatar.com

### DUBAI · TDD FURNISHING TRADING LLC

Dubai Design District, PO Box 33975  
Office NO 105B, Building 7  
United Arab Emirates  
Ph. +971 4 584 5178  
office@tddfze.com

### HONG KONG · VERANDA

Chung Mei Centre, Unit A4/ F, Block A  
15-17 Hing Yip Street  
Kwun Tong, Hong Kong  
Ph. +852 2868 9728  
jean@veranda.com.hk

### SHANGHAI · EUROART

3/A, NO 209, Wending Rd.  
Xuhui Dist., 200030  
Shanghai, China  
Ph. +86 021-34612162  
marketing@china-euroart.com

### SHENZHEN · EUROART

RM 813, Yizhan Center II, Zhanyi Rd.  
Luohu Dist, Shenzhen, China  
Ph. +86 0755-82320030  
marketing@china-euroart.com

### TOKYO · TOMITA TOKYO

2-2-1 Kyobashi Edogrand 1F  
Kyobashi, Chuo-ku, 104-0031  
Tokyo, Japan  
Ph. +81 3.3273.7500  
info@tominet.co.jp

## OCEANIA

### AUCKLAND · DIVA INTERNATIONAL

16 Railway Street  
Newmarket, 1023  
Auckland, New Zealand  
Ph. +64 9 523 0625  
andrew@diva.co.nz

### MELBOURNE · WESTBURY TEXTILES

503 High Street  
Prahran, VIC 3181  
Melbourne, Australia  
Ph. +61 3 9529 6211  
dianne@westburytextiles.com

### SYDNEY · WESTBURY TEXTILES

15-19 Boundary St.  
Ruchcutters Bay NSW 2011  
Sydney, Australia  
Ph. +61 2 9380 6644  
nsw@westburytextiles.com

## AFRICA

### CUREPIPE · NATHALIE HARDY INTERIORS

270 Royal Road  
Curepipe, Mauritius  
Ph. +679 698 9772  
nh@nathaliehardy.com

## HEAD OFFICE

### SPAIN · ALICANTE

C/ Del Rublo, 63 P.I. Las Atalayas  
03114 Alicante, Spain  
Ph. +34 965 932 235  
sales@pepepenalver.com  
pepepenalver.com

© 2025 PEPE PEÑALVER  
All Rights Reserved.



